

revvity

Alpha technology product list

The power to assay even the most complex samples

October 2025

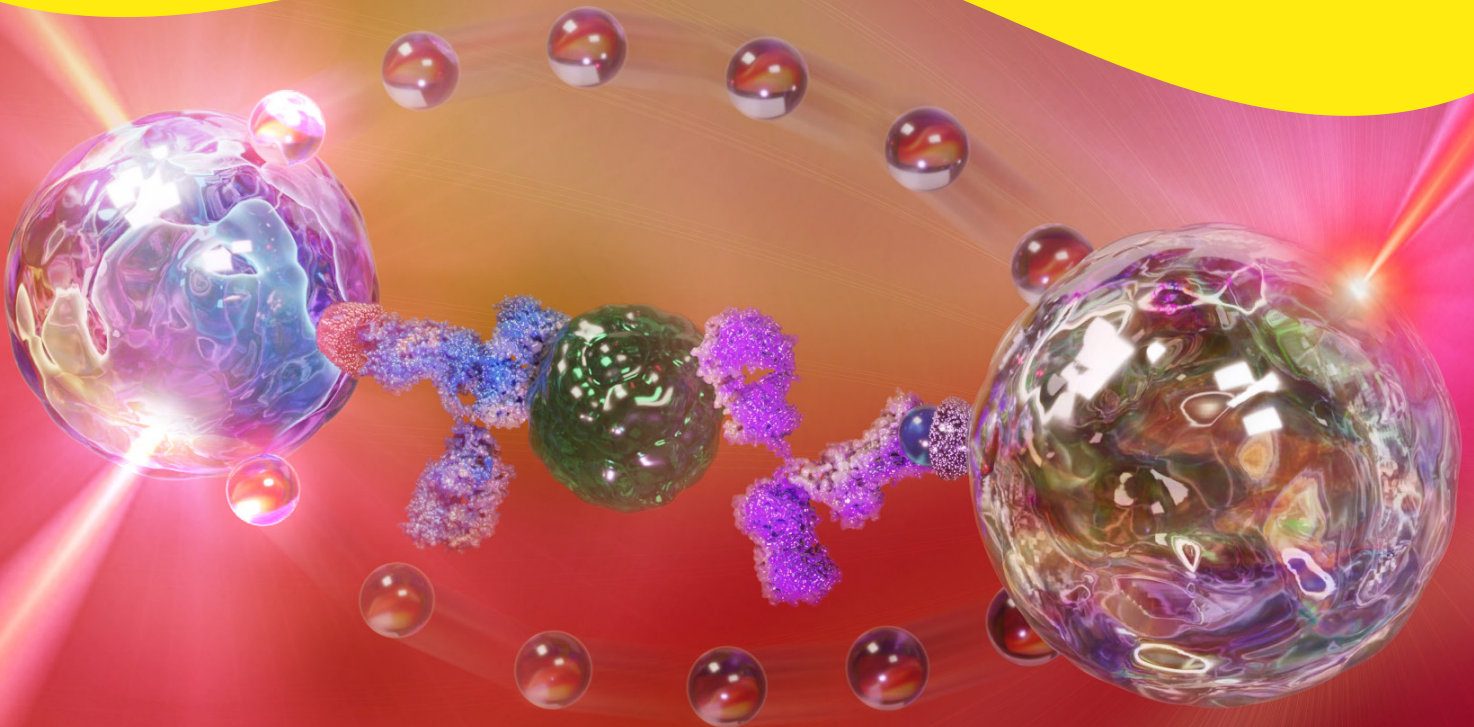


Table of contents

Biomarkers and Cytokines	3
AlphaLISA kits	3
AlphaPlex kits	10
Biologic – AlphaLISA kits	11
Binding Assays – AlphaLISA kits	12
Epigenetics Reagents	13
Epigenetics Biochemical Assay Reagents (AlphaLISA)	13
Cell-based Epigenetic Assays	13
Protein Phosphorylation Analysis	14
Alpha SureFire kits	14
Terbium SureFire Ultra	27
Beads for Biochemical kinase assays	29
Target Engagement	29
Alpha Technology Products	29
Alpha ToolBox	29
Alpha Donor Beads	30
Unconjugated Beads	30
Antibody capture solutions	30
Tag-capture solutions	30
AlphaLISA Acceptor Beads	31
Unconjugated Beads	31
Antibody capture solutions	31
Tag-capture solutions	31
AlphaPlex Acceptor Beads	32
AlphaScreen Kits and Kit Components	33
Alpha Buffers	34
Control beads – TruHits	34
Control beads – Omnibeads	34

Ordering Information

Please refer to the following for ordering Alpha Technology products. AlphaLISA™, AlphaScreen™ and AlphaLISA™ *SureFire™ Ultra* are for research purposes or agronomy/veterinary fields diagnostics only and are not intended for human diagnostic applications.

Biomarker and Cytokine AlphaLISA Kits

Angiogenesis

Product Description		Part Number	Part Number	Part Number	Part Number
		500 Assay Points	5,000 Assay Points	100 Assay Points	Standard
Angiopoietin 2	ANGPT2	AL3015C	AL3015F	AL3015HV	AL3015S
Angiopoietin-like 3	ANGPTL3	AL3016C	AL3016F	AL3016HV	AL3016S
Angiopoietin-like 4	ANGPTL4	AL3017C	AL3017F	AL3017HV	AL3017S
Vascular Endothelial Growth Factor	VEGF	AL201C	AL201F		AL201S

Animal Health

Product Description		Part Number	Part Number	Part Number	Part Number
		500 Assay Points	5,000 Assay Points	100 Assay Points	Standard
Immunoglobulin G (bovine)	IgG (bovine)	AL530C	AL530F	AL530HV	AL530S
Immunoglobulin G1 (bovine)	IgG1 (bovine)	AL531C	AL531F	AL531HV	AL531S
Immunoglobulin G2 (bovine)	IgG2 (bovine)	AL532C	AL532F	AL532HV	AL532S
Immunoglobulin M (bovine)	IgM (bovine)	AL533C	AL533F	AL533HV	AL533S
Interferon β (porcine)	IFN- β (porcine)	AL577C	AL577F	AL577HV	AL577S
Interferon γ (bovine)	IFN- γ (bovine)	AL535C	AL535F	AL535HV	AL535S
Interferon γ (ovine)	IFN- γ (ovine)	AL560C	AL560F	AL560HV	AL560S
Interleukin 1 β (bovine)	IL-1 β (bovine)	AL539C	AL539F	AL539HV	AL539S
Interleukin 1 β (porcine)	IL-1 β (porcine)	AL575C	AL575F	AL575HV	AL575S
Interleukin 4 (bovine)	IL-4 (bovine)	AL542C	AL542F	AL542HV	AL542S
Interleukin 4 (porcine)	IL-4 (porcine)	AL578C	AL578F	AL578HV	AL578S
Interleukin 6 (bovine)	IL-6 (bovine)	AL538C	AL538F	AL538HV	AL538S
Interleukin 6 (porcine)	IL-6 (porcine)	AL573C	AL573F	AL573HV	AL573S
Interleukin 8 (bovine/ovine)	IL-8 (bovine/ovine)	AL545C	AL545F	AL545HV	AL545S
Interleukin 8 (porcine)	IL-8 (porcine)	AL571C	AL571F	AL571HV	AL571S
Interleukin 10 (bovine/ovine)	IL-10 (bovine/ovine)	AL546C	AL546F	AL546HV	AL546S
Interleukin 12 (porcine)	IL-12 (porcine)	AL554C	AL554F	AL554HV	AL554S
Interleukin 12/p40 (bovine)	IL-12 p40 (bovine)	AL553C	AL553F	AL553HV	AL553S
Interleukin 13 (bovine)	IL-13 (bovine)	AL557C	AL557F	AL557HV	AL557S
Interleukin 13 (porcine)	IL-13 (porcine)	AL557C	AL557F	AL557HV	AL557S
Interleukin 17A (bovine)	IL-17A (bovine)	AL547C	AL547F	AL547HV	AL547S
Interleukin 17A (porcine)	IL-17A (porcine)	AL572C	AL572F	AL572HV	AL572S
Interleukin 18 (bovine)	IL-18 (bovine)	AL558C	AL558F	AL558HV	AL558S
Interleukin 18 (porcine)	IL-18 (porcine)	AL559C	AL559F	AL559HV	AL559S
TNF α (bovine)	TNF- α (bovine)	AL534C	AL534F	AL534HV	AL534S

Kits launched recently are highlighted in bold and orange.

Autophagy

Product Description		Part Number	Part Number	Part Number	Part Number
		500 Assay Points	5,000 Assay Points	100 Assay Points	Standard
LC3B	LC3B	AL306C	AL306F		AL306S
LC3B-II	LC3B-II	AL3210C	AL3210F	AL3210HV	AL3210S

Cardiovascular

Product Description		Part Number	Part Number	Part Number	Part Number
		500 Assay Points	5,000 Assay Points	100 Assay Points	Standard
Alpha Smooth Muscle Actin (SMA)	αSMA	AL3209C	AL3209F	AL3209HV	AL3209S
Fibrin D-dimer	D-dimer	AL290C	AL290F		AL290S
Intercellular Adhesion Molecule 1	ICAM-1	AL282C	AL282F		AL282S
N-terminal pro b-type natriuretic peptide	NT-proBNP	AL3114C	AL3114F	AL3114HV	AL3114S
Myeloperoxidase	MPO	AL245C	AL245F		AL245S
Myoglobin	MB	AL285C	AL285F		AL285S
Plasminogen Activator Inhibitor-1	PAI-1	AL286C	AL286F		AL286S
Proprotein Convertase Subtilisin/Kexin 9	PCSK9	AL270C	AL270F		AL270S
Tissue Plasminogen Activator	TPA	AL250C	AL250F		AL250S
Vascular endothelial growth factor receptor 1	FLT1/VEGFR1	AL3018C	AL3018F	AL3018HV	AL3018S

Inflammation

Product Description		Part Number	Part Number	Part Number	Part Number
		500 Assay Points	5,000 Assay Points	100 Assay Points	Standard
C-C motif chemokine ligand 1	CCL1	AL3099C	AL3099F	AL3099HV	AL3099S
C-C motif chemokine ligand 2 (Monocyte Chemoattractant Protein-1)	CCL2 / MCP1	AL244C	AL244F		AL244S
C-C motif chemokine ligand 2 (Monocyte Chemoattractant Protein 1)	"CCL2 / MCP-1 (mouse/rat)"	AL509C	AL509F		AL509S
C-C motif chemokine ligand 3 (Macrophage inflammatory protein 1-α)	CCL3 / MIP-1α	AL257C	AL257F		AL257S
C-C motif chemokine ligand 4 (Macrophage inflammatory protein 1-β)	CCL4 / MIP-1β	AL258C	AL258F		AL258S
C-C motif chemokine ligand 4 (Macrophage inflammatory protein 1-β) (mouse)	CCL4 / MIP-1β (mouse)	AL3190C	AL3190F	AL3190HV	AL3190S
C-C motif chemokine ligand 5 (T-cell-specific protein RANTES)	CCL5 / RANTES	AL289C	AL289F		AL289S
C-C motif chemokine ligand 5 (T-cell-specific protein RANTES)		AL589C	AL589F		AL589S
C-C motif chemokine ligand 8	CCL8/MCP2 (mouse)	AL582C	AL582F	AL582HV	AL582S
C-C motif chemokine ligand 17	CCL17	AL3206C	AL3206F	AL3206HV	AL3206S
C-C motif chemokine ligand 18	CCL18	AL3106C	AL3106F	AL3106HV	AL3106S
C-C motif chemokine ligand 22	CCL22	AL3188C	AL3188F	AL3188HV	AL3188S
C-Reactive Protein	CRP	AL233C	AL233F		AL233S

Kits launched recently are highlighted in bold and orange.

Inflammation (continued...)

Product Description		Part Number	Part Number	Part Number	Part Number
		500 Assay Points	5,000 Assay Points	100 Assay Points	Standard
C-X-C motif chemokine 1, GRO- α	CXCL1/GRO- α	AL349C	AL349F		AL349S
C-X-C motif chemokine ligand 4/PF4	CXCL4/PF4	AL398C	AL398F	AL398HV	AL398S
"C-X-C motif chemokine 9 (Gamma-interferon-induced monokine)"	CXCL9 / MIG	AL280C	AL280F		AL280S
"C-X-C motif chemokine 11 (Interferon inducible T-cell a chemoattractant)"	CXCL11 / I-TAC	AL260C	AL260F		AL260S
"C-X-C motif chemokine 10 (10 kD α IFN γ -induced protein)"	CXCL10 / IP-10	AL3163C	AL3163F	AL3163HV	AL3163S
"C-X-C motif chemokine 10 (10 kD α IFN γ -induced protein) (mouse)"		AL556C	AL556F	AL556HV	AL556S
C-X-C motif chemokine 12	CXCL12	AL3207C	AL3207F	AL3207HV	AL3207S
C-X-C motif chemokine ligand 13	CXCL13	AL3098C	AL3098F	AL3098HV	AL3098S
C-X-C motif chemokine ligand 13 (mouse)	CXCL13 (mouse)	AL581C	AL581F	AL581HV	AL581S
Granulocyte-Colony Stimulating Factor	G-CSF	AL213C	AL213F		AL213S
Granulocyte-Monocyte Colony-Stimulating Factor	GM-CSF (human)	AL216C	AL216F		AL216S
Granzyme B	Granzyme B	AL3170C	AL3170F	AL3170HV	
Interferon α	IFN- α	AL297C	AL297F		AL297S
Interferon α (mouse)	IFN- α (mouse)	AL550C	AL550F	AL550HV	AL550S
Interferon β	IFN- β	AL3191C	AL3191F	AL3191HV	AL3191S
Interferon β (mouse)	IFN- β (mouse)	AL586C	AL586F	AL586HV	AL586S
Interferon γ	IFN- γ	AL3153C	AL3153F	AL3153HV	AL3153S
Interferon γ Biotin-Free (human)	IFN- γ	AL3154C	AL3154F	AL3154HV	AL3154S
Interferon γ (cynomologus)	IFN- γ (cynomologus)	AL561C	AL561F	AL561HV	AL561S
Interferon γ (mouse)	IFN- γ (mouse)	AL593C	AL593F	AL593HV	AL593S
Interferon γ (rat)	IFN- γ (rat)	AL3195C	AL3195F	AL3195HV	AL3195S
Interferon λ 2	IFN- λ 2	AL3031C	AL3031F	AL3031HV	AL3031S
Interleukin 1 Receptor Antagonist	IL-1RA	AL358C	AL358F	AL358HV	AL358S
Interleukin 1 Receptor-associated Kinase 4	IRAK4	AL3117C	AL3117F	AL3117HV	AL3117S
Interleukin 1 α	IL-1 α	AL238C	AL238F		AL238S
Interleukin 1 β	IL-1 β	AL3160C	AL3160F	AL3160HV	AL3160S
Interleukin 1 β (mouse)	IL-1 β (mouse)	AL592C	AL592F	AL592HV	AL592S
Interleukin 1 β (rat)	IL-1 β (rat)	AL518C	AL518F		AL518S
Interleukin 2	IL-2	AL3155C	AL3155F	AL3155HV	AL3155S
Interleukin 2 Biotin-Free	IL-2	AL3156C	AL3156F	AL3156HV	AL3156S
Interleukin 2 (mouse)	IL-2 (mouse)	AL585C	AL585F		AL585S
Interleukin 3	IL-3	AL3134C	AL3134F	AL3134HV	AL3134S
Interleukin 3 (mouse)	IL-3 (mouse)	AL587C	AL587F	AL587HV	AL587S
Interleukin 4	IL-4	AL266C	AL266F		AL266S
Interleukin 4 (mouse)	IL-4 (mouse)	AL567C	AL567F	AL567HV	AL567S
Interleukin 4 (rhesus)	IL-4 (rhesus)	AL564C	AL564F	AL564HV	AL564S
Interleukin 5	IL-5	AL267C	AL267F		AL267S
Interleukin 5 (mouse)	IL-5 (mouse)	AL569C	AL569F	AL569HV	AL569S

* Note that kits detect the "total" protein, i.e. these assays do not specifically detect the phosphorylated receptors

Kits launched recently are highlighted in bold and orange.

Inflammation (continued...)

Product Description		Part Number	Part Number	Part Number	Part Number
		500 Assay Points	5,000 Assay Points	100 Assay Points	Standard
Interleukin 6	IL-6	AL223C	AL223F		AL223S
Interleukin 6 Biotin-Free	IL-6	AL3203C	AL3203F	AL3203HV	AL3203S
Interleukin 6	IL-6	AL3202C	AL3202F	AL3202HV	AL3202S
Interleukin 6 (mouse)	IL-6 (mouse)	AL504C	AL504F		AL504S
Interleukin 6 (monkey)	IL-6 (monkey)	AL555C	AL555F	AL555HV	AL555S
Interleukin 8	IL-8	AL3164C	AL3164F	AL3164HV	AL3164S
Interleukin 8 Biotin-Free	IL-8	AL3165C	AL3165F	AL3165HV	AL3165S
Interleukin 10	IL-10	AL3159C	AL3159F	AL3159HV	AL3159S
Interleukin 10 (mouse)	IL-10 (mouse)	AL502C	AL502F		AL502S
Interleukin 11	IL-11	AL293C	AL293F		AL293S
Interleukin 12 p70	IL-12 p70	AL3116C	AL3116F	AL3116HV	AL3116S
Interleukin 12/Interleukin 23	IL-12/IL-23	AL382C	AL382F	AL382HV	AL382S
Interleukin 13	IL-13	AL240C	AL240F		AL240S
Interleukin 13 (mouse)	IL-13 (mouse)	AL565C	AL565F	AL565HV	AL565S
Interleukin 15 Biotin-Free	IL-15	AL360C	AL360F	AL360HV	
Interleukin 15	IL-15	AL3196C	AL3196F	AL3196HV	AL3196S
Interleukin 17F	IL-17F	AL391C	AL391F	AL391HV	AL391S
Interleukin 17A	IL-17A	AL3161C	AL3161F	AL3161HV	AL3161S
Interleukin 17A Biotin-Free	IL-17A	AL3162C	AL3162F	AL3162HV	AL3162S
Interleukin 17A (mouse/rat)	IL-17A (mouse/rat)	AL588C	AL588F		AL588S
Interleukin 17A (mouse/rat) Biotin-Free	IL-17A (mouse/rat)	AL590C	AL590F	AL590HV	
Interleukin 17A (mouse)	IL-17 (mouse)	AL540C	AL540F	AL540HV	AL540S
Interleukin 18	IL-18	AL3137C	AL3137F		AL3137S
Interleukin 18 (mouse)	IL-18 (mouse)	AL3189C	AL3189F	AL3189HV	AL3189S
Interleukin 18-binding protein	IL-18BP	AL3096C	AL3096F	AL3096HV	AL3096S
Interleukin 21	IL-21	AL3043C	AL3043F	AL3043HV	AL3043S
Interleukin 22 (human/rat)	IL-22	AL320C	AL320F	AL320HV	AL320S
Interleukin 23	IL-23	AL3006C	AL3006F	AL3006HV	AL3006S
Interleukin 25	IL-25	AL3135C	AL3135F	AL3135HV	AL3135S
Interleukin 25 (mouse)	IL-25 (mouse)	AL570C	AL570F	AL570HV	AL570S
Interleukin 28B	IL-28B	AL365C	AL365F	AL365HV	AL365S
Interleukin 31	IL-31	AL3003C	AL3003F	AL3003HV	AL3003S
Interleukin 33	IL-33	AL3042C	AL3042F	AL3042HV	AL3042S
Interleukin 33 (mouse)	IL-33 (mouse)	AL566C	AL566F	AL566HV	AL566S
Periostin	Periostin	AL3105C	AL3105F	AL3105HV	AL3105S
Platelet-derived growth factor	PDGF (BB dimer)	AL3049C	AL3049F	AL3049HV	AL3049S
Thymic stromal lymphopoietin	TSLP	AL3040C	AL3040F	AL3040HV	AL3040S
Tumor Necrosis Factor α	TNF- α	AL3157C	AL3157F	AL3157HV	AL3157S
Tumor Necrosis Factor α (cynomolgus)	TNF- α (cynomolgus)	AL562C	AL562F	AL562HV	AL562S
Tumor Necrosis Factor α (mouse)	TNF- α (mouse)	AL505C	AL505F		AL505S
Tumor Necrosis Factor α Biotin-Free	TNF- α	AL3158C	AL3158F	AL3158HV	AL3158S
Tumor Necrosis Factor α (mouse) Biotin-Free	TNF- α (mouse)	AL541C	AL541F	AL541HV	

Kits launched recently are highlighted in bold and orange.

Product Description		Part Number	Part Number	Part Number	Part Number
		500 Assay Points	5,000 Assay Points	100 Assay Points	Standard
Tumor Necrosis Factor receptor 1 (soluble)	sTNFR1	AL3088C	AL3088F	AL3088HV	AL3088S
Tumor Necrosis Factor receptor 1 (soluble, mouse)	sTNFR1 (mouse)	AL579C	AL579F	AL579HV	AL579S

Metabolic and Hormones

Product Description		Part Number	Part Number	Part Number	Part Number
		500 Assay Points	5,000 Assay Points	100 Assay Points	Standard
Adiponectin	Adiponectin	AL209C	AL209F		AL209S
Apolipoprotein A1	Apo-A1	AL389C	AL389F	AL389HV	AL389S
Aspartate transaminase	AST	AL3078C	AL3078F	AL3078HV	AL3078S
Serum Albumin (human)	HSA	AL294C	AL294F		AL294S
Serum Albumin (human) Biotin-Free	HSA	AL363C	AL363F	AL363HV	
Serum Albumin (mouse)	Albumin (mouse)	AL508C	AL508F		AL508S
C-Peptide (human)	C-Peptide (human)	AL299C	AL299F		AL299S
C-Peptide (mouse/rat)	C-Peptide (mouse/rat)	AL510C	AL510F		AL510S
Chorionic Gonadotropin (human)	hCG	AL3001C	AL3001F	AL3001HV	AL3001S
Corticosterone	Corticosterone	AL3020C	AL3020F	AL3020HV	AL3020S
Cysteine rich angiogenic inducer 61	CYR61	AL3076C	AL3076F	AL3076HV	AL3076S
Erythropoietin	EPO	AL206C	AL206F		AL206S
Ghrelin (active)	Ghrelin (active)	AL3007C	AL3007F	AL3007HV	AL3007S
Ghrelin (total)	Ghrelin (total)	AL3012C	AL3012F	AL3012HV	AL3012S
Glucagon	Glucagon	AL3140C	AL3140F	AL3140HV	AL3140S
Glucagon-like peptide-1	GLP-1	AL359C	AL359F	AL359HV	AL359S
Growth Hormone	GH	AL214C	AL214F		AL214S
Heme oxygenase 1	HO-1	AL3026C	AL3026F	AL3026HV	AL3026S
Heme oxygenase 2	HO-2	AL3027C	AL3027F	AL3027HV	AL3027S
Human Factor VIII	Factor VIII	AL342C	AL342F	AL342HV	AL342S
Insulin	Insulin (Human/mouse)	AL3184C	AL3184F	AL3184HV	AL3184S
Insulin-like Growth Factor 1	IGF-1	AL236C	AL236F		AL236S
Insulin-like Growth Factor 1 (rat)	IGF-1 (rat)	AL552C	AL552F	AL552HV	AL552S
Insulin-like Growth Factor 2	IGF-2	AL237C	AL237F		AL237S
Kidney Injury Molecule 1	KIM-1	AL3075C	AL3075F	AL3075HV	AL3075S
Leptin	Leptin	AL225C	AL225F		AL225S
Leptin (mouse)	Leptin (mouse)	AL521C	AL521F		AL521S
Muscleblind-like protein 1	MBNL1	AL3008C	AL3008F		AL3008S

Kits launched recently are highlighted in **bold and orange**.

Product Description		Part Number	Part Number	Part Number	Part Number
		500 Assay Points	5,000 Assay Points	100 Assay Points	Standard
Paraoxonase 1	PON-1	AL3071C	AL3071F	AL3071HV	AL3071S
Placental Growth Factor	PLGF	AL3030C	AL3030F	AL3030HV	AL3030S
Src-homology domain-2 containing protein tyrosine phosphatase 2	SHP-2	AL3074C	AL3074F	AL3074HV	AL3074S
Testosterone	Testosterone	AL324C	AL324F	AL324HV	AL324S
Thyroid stimulating hormone	TSH	AL3005C	AL3005F	AL3005HV	AL3005S
Transthyretin	TTR	AL3111C	AL3111F	AL3111HV	AL3111S

Neuroscience

Product Description		Part Number	Part Number	Part Number	Part Number
		500 Assay Points	5,000 Assay Points	100 Assay Points	Standard
Amyloid β 1-40	A β 1-40	AL202C	AL202F		AL202S
Amyloid β 1-42	A β 1-42	AL203C	AL203F		AL203S
Amyloid β 1-42 (high specificity)	A β 1-42 (high specificity)	AL276C	AL276F		AL276S
Amyloid β 1-x	Amyloid β 1-x	AL288C	AL288F		
Apolipoprotein E	ApoE	AL395C	AL395F	AL395HV	AL395S
Ataxin-2	Ataxin-2	AL3193C	AL3193F	AL3193HV	AL3193S
Ataxin-2 Mutant	Ataxin-2	AL3197C	AL3197F	AL3197HV	AL3197S
Beta-Nerve Growth Factor	β -NGF	AL246C	AL246F		AL246S
Frataxin	Frataxin	AL322C	AL322F	AL322HV	AL322S
Glial fibrillary acidic protein	GFAP	AL3185C	AL3185F	AL3185HV	AL3185S
Glial Derived Neurotrophic Factor	GDNF	AL319C	AL319F	AL319HV	AL319S
Huntingtin	HTT	AL3204C	AL3204F	AL3204HV	AL3204S
Huntingtin Mutant	HTT	AL3205C	AL3205F	AL3205HV	AL3205S
Neurofilament L	NF-L	AL3199C	AL3199F	AL3199HV	AL3199S
Mesencephalic astrocyte-derived neurotrophic factor	MANF	AL3009C	AL3009F	AL3009HV	AL3009S
Microtubule-Associated Protein Tau	Tau	AL271C	AL271F		AL271S
Phosphorylated neurofilament heavy chain	pNFH	AL3112C	AL3112F	AL3112HV	AL3112S
Translocase of outer membrane 20	TOM20	AL3178C	AL3178F	AL3178HV	AL3178S
Triggering receptor expressed on myeloid cells 2	TREM2	AL3152C	AL3152F	AL3152HV	AL3152S
Triggering receptor expressed on myeloid cells 2 (mouse)	TREM2 (mouse)	AL591C	AL591F	AL591HV	AL591S

Oncology

Product Description		Part Number	Part Number	Part Number	Part Number
		500 Assay Points	5,000 Assay Points	100 Assay Points	Standard
Alpha-1 Anti-Trypsin	A1AT	AL344C	AL344F	AL344HV	AL344S
BCL-2	BCL-2	AL384C	AL384F	AL384HV	AL384S
Beta-secretase 1	BACE1	AL3033C	AL3033F	AL3033HV	AL3033S

Kits launched recently are highlighted in bold and orange.

Oncology (continued...)

Product Description		Part Number	Part Number	Part Number	Part Number
		500 Assay Points	5,000 Assay Points	100 Assay Points	Standard
Breast cancer type 2 susceptibility protein	BRCA2	AL3036C	AL3036F	AL3036HV	AL3036S
Cluster of differentiation 28	CD28	AL3044C	AL3044F	AL3044HV	AL3044S
Cluster of differentiation 40	CD40	AL3102C	AL3102F	AL3102HV	AL3102S
Cluster of differentiation 70	CD70	AL3103C	AL3103F	AL3103HV	AL3103S
Cluster of differentiation 276	CD276, B7-H3	AL3060C	AL3060F	AL3060HV	AL3060S
Collagen, type I, alpha 1	COL1A1	AL371C	AL371F	AL371HV	AL371S
E-cadherin	E-cadherin	AL370C	AL370F	AL370HV	AL370S
Epidermal growth factor	EGF	AL339C	AL339F	AL339HV	AL339S
Epidermal growth factor receptor	EGFR	AL340C	AL340F	AL340HV	AL340S
Erythropoietin	EPO	AL206C	AL206F		AL206S
FAS ligand	FASL	AL3104C	AL3104F	AL3104HV	AL3104S
Fibroblast growth factor 23	FGF23	AL3002C	AL3002F	AL3002HV	AL3002S
Fibronectin	FN	AL3056C	AL3056F	AL3056HV	AL3056S
Fibronectin (human/mouse)	FN (human/mouse)	AL3174C	AL3174F	AL3174HV	AL3174S
Fibronectin-EDA Human	FN-EDA	AL3175C	AL3175F	AL3175HV	AL3175S
Hyaluronic Acid	HA	AL354C	AL354F	AL354HV	AL354S
Human MHC class I antigen E	HLA-E	AL3057C	AL3057F	AL3057HV	AL3057S
Human Stem Cell Factor	SCF (KIT-ligand)	AL3019C	AL3019F	AL3019HV	AL3019S
Mast/stem cell growth factor receptor	CD117 (SCFR)	AL3021C	AL3021F	AL3021HV	AL3021S
Matrix Metalloproteinase-1	MMP-1	AL242C	AL242F		AL242S
Matrix Metalloproteinase-3	MMP-3	AL284C	AL284F		AL284S
Matrix Metalloproteinase-7	MMP-7	AL378C	AL378F	AL378HV	AL378S
Matrix Metalloproteinase-8	MMP-8	AL374C	AL374F	AL374HV	AL374S
Matrix Metalloproteinase-9	MMP-9	AL3138C	AL3138F		AL3138S
Matrix Metalloproteinase-9 (mouse)	MMP-9 (mouse)	AL519C	AL519F		AL519S
Matrix Metalloproteinase-12	MMP-12	AL375C	AL375F	AL375HV	AL375S
Matrix Metalloproteinase-13	MMP-13	AL318C	AL318F	AL318HV	AL318S
Mesothelin	Mesothelin	AL3063C	AL3063F	AL3063HV	AL3063S
Neprilysin	NEP	AL337C	AL337F	AL337HV	AL337S
Nidogen-1	Nidogen-1	AL367C	AL367F	AL367HV	AL367S
Oncostatin M	Oncostatin M	AL341C	AL341F	AL341HV	AL341S
OX40 ligand	OX40L	AL3100C	AL3100F	AL3100HV	AL3100S
Phosphatase and tensin homolog	PTEN	AL380C	AL380F	AL380HV	AL380S
Pro-Collagen 1 C-Terminal Pro-Peptide	PICP	AL3208C	AL3208F	AL3208HV	AL3208S
Programmed cell death protein 1	PD-1	AL343C	AL343F	AL343HV	AL343S
Programmed death-ligand 1	PD-L1	AL355C	AL355F	AL355HV	AL355S
Prostatic Specific Antigen	PSA	AL228C	AL228F		AL228S

Kits launched recently are highlighted in bold and orange.

Oncology (continued...)

Product Description		Part Number	Part Number	Part Number	Part Number
		500 Assay Points	5,000 Assay Points	100 Assay Points	Standard
Receptor Tyrosine-Protein Kinase ErbB-2 (HER2)*	ERBB2 / HER2	AL235C	AL235F		AL235S
Tissue inhibitor of metalloproteinases-1	TIMP-1	AL272C	AL272F		AL272S
Tissue inhibitor of metalloproteinases-2	TIMP-2	AL3091C	AL3091F	AL3091HV	AL3091S
TNF-related apoptosis-inducing ligand	TRAIL	AL3089C	AL3089F	AL3089HV	AL3089S
Transforming growth factor beta 1	TGF- β 1	AL336C	AL336F	AL336HV	AL336S
Transforming growth factor beta 1 Biotin-Free	TGF- β 1	AL361C	AL361F	AL361HV	AL361S
Trefoil Factor 3	TFF3	AL273C	AL273F		AL273S
Vascular Cell Adhesion Molecule-1	VCAM-1	AL338C	AL338F	AL338HV	AL338S
Vimentin	Vimentin	AL372C	AL372F	AL372HV	AL372S

Second Messenger

Product Description		Part Number	Part Number	Part Number
		1000 Points	10,000 Points	50,000 Points
Inositol monophosphate	IP-1	AL3145D	AL3145M	AL3145R
Cyclic adenosine monophosphate	cAMP	6760635D	6760635M	6760635R

Kidney

Product Description		Part Number	Part Number	Part Number	Part Number
		500 Assay Points	5,000 Assay Points	100 Assay Points	Standard
Neutrophil gelatinase-associated lipocalin	NGAL	AL364C	AL364F	AL364HV	AL364S

Virology

Product Description		Part Number	Part Number	Part Number	Part Number
		500 Assay Points	5,000 Assay Points	100 Assay Points	Standard
Adeno Associated Virus 1 Capsid	AAV1	AL3181C	AL3181F	AL3181HV	AL3181S
Adeno Associated Virus 2 Capsid	AAV2	AL3177C	AL3177F	AL3177HV	AL3177S
Adeno Associated Virus 3B Capsid	AAV3B	AL3187C	AL3187F	AL3187HV	AL3187S
Adeno Associated Virus 5 Capsid	AAV5	AL3183C	AL3183F	AL3183HV	AL3183S
Adeno Associated Virus 6 Capsid	AAV6	AL3186C	AL3186F	AL3186HV	AL3186S
Adeno Associated Virus 8 Capsid	AAV8	AL3180C	AL3180F	AL3180HV	AL3180S
Adeno Associated Virus 9 Capsid	AAV9	AL3182C	AL3182F	AL3182HV	AL3182S
Hepatitis B virus e-antigen	HBeAg	AL3201C	AL3201F	AL3201HV	AL3201S
Hepatitis B virus surface antigen	HBsAg	AL3083C	AL3083F	AL3083HV	AL3083S

Kits launched recently are highlighted in bold and orange.

Virology (continued...)

Product Description		Part Number	Part Number	Part Number	Part Number
		500 Assay Points	5,000 Assay Points	100 Assay Points	Standard
HIV p24 (high sensitivity)	HIV p24 (high sensitivity)	AL291C	AL291F		AL291S
HIV p24 Biotin-Free	HIV p24	AL332C	AL332F	AL332HV	
SARS-CoV2 Spike S1	SARS-CoV2 Spike S1	AL3142C	AL3142F		AL3142S
SARS CoV2 Nucleocapsid	SARS CoV2 Nucleocapsid	AL3141C	AL3141F		AL3141S

AlphaPlex Multiplexing Biomarker Kits

Product Description	Part Number	Part Number	Part Number
	500 Assay Points	5,000 Assay Points	100 Assay Points
AlphaPlex ICAM-1 Sm	AP282SM-C	AP282SM-F	AP282SM-HV
AlphaPlex ICAM-1 Tb	AP282TB-C	AP282TB-F	AP282TB-HV
AlphaPlex IFN- γ Sm	AP217SM-C	AP217SM-F	AP217SM-HV
AlphaPlex IFN- γ Tb	AP217TB-C	AP217TB-F	AP217TB-HV
AlphaPlex IL-1 β Sm	AP220SM-C	AP220SM-F	AP220SM-HV
AlphaPlex IL-1 β Tb	AP220TB-C	AP220TB-F	AP220TB-HV
AlphaPlex IL-2 Sm	AP221SM-C	AP221SM-F	AP221SM-HV
AlphaPlex IL-2 Tb	AP221TB-C	AP221TB-F	AP221TB-HV
AlphaPlex IL-6 Tb	AP223TB-C	AP223TB-F	AP223TB-HV
AlphaPlex IL-17 Sm	AP219SM-C	AP219SM-F	AP219SM-HV
AlphaPlex IL-17 Tb	AP219TB-C	AP219TB-F	AP219TB-HV
AlphaPlex Rat IL-22 Tb	AP320TB-C	AP320TB-F	AP320TB-HV
AlphaPlex TNF- α Sm	AP208SM-C	AP208SM-F	AP208SM-HV
AlphaPlex TNF- α Tb	AP208TB-C	AP208TB-F	AP208TB-HV

AlphaLISA Biologics Kits

Bioprocess

Product Description		Part Number	Part Number	Part Number	Part Number
		500 Assay Points	5,000 Assay Points	100 Assay Points	Standard
Serum Albumin (human)	HSA	AL294C	AL294F		AL294S
Serum Albumin (human) Biotin-Free	HSA	AL363C	AL363F	AL363HV	
Serum Albumin (mouse)	Albumin (mouse)	AL508C	AL508F		AL508S
Host Cell Residual DNA	Residual DNA	AL331C	AL331F	AL331HV	AL331S
CHO HCP	CHO Host Cell Protein	AL3176C	AL3176F	AL3176HV	AL3176S
HEK 293 HCP	HEK 293 Host Cell Protein	AL3198C	AL3198F	AL3198HV	AL3198S

Kits launched recently are highlighted in **bold and orange**.

Ig Detection

Product Description		Part Number	Part Number	Part Number	Part Number
		500 Assay Points	5,000 Assay Points	100 Assay Points	Standard
Immunoglobulin E (mouse)	IgE (mouse)	AL526C	AL526F	AL526HV	AL526S
Immunoglobulin G (human)	IgG (human)	AL205C	AL205F		AL205S
Immunoglobulin G (pan mouse)	IgG (pan mouse)	AL584C	AL584F	AL584HV	AL584S
Immunoglobulin G Fc (human)	IgG Fc (human)	AL3129C	AL3129F	AL3129HV	AL3129S
Immunoglobulin G (mouse)	IgG (mouse)	AL529C	AL529F	AL529HV	AL529S
Immunoglobulin G1 (human)	IgG1 (human)	AL3171C	AL3171F	AL3171HV	AL3171S
Immunoglobulin G1 (mouse)	IgG1 (mouse)	AL522C	AL522F	AL522HV	AL522S
Immunoglobulin G2a (mouse)	IgG2a (mouse)	AL523C	AL523F	AL523HV	AL523S
Immunoglobulin G3 (mouse)	IgG3 (mouse)	AL525C	AL525F	AL525HV	AL525S
Immunoglobulin G4 (human)	IgG4 (human)	AL310C	AL310F	AL310HV	AL310S
Immunoglobulin M (human)	IgM (human)	AL263C	AL263F		AL263S
Immunoglobulin M (mouse)	IgM (mouse)	AL527C	AL527F	AL527HV	AL527S
Immunoglobulin Kappa light chain	Kappa light chain	AL3023C	AL3023F	AL3023HV	AL3023S

AlphaLISA Binding Kits

Product Description	Part Number	Part Number	Part Number
	500 Assay Points	5,000 Assay Points	100 Assay Points
4-1BB/4-1BBL	AL3113C	AL3113F	
ACE2/S1 Binding	AL3146C	AL3146F	
C1Q Binding Kit	AL3169C	AL3169F	AL3169HV
Cereblon Binding	AL3147C	AL3147F	
CD28/CD86	AL3131C	AL3131F	
clAP-BIR2 Binding	AL3166C	AL3166F	
clAP-BIR3 Binding	AL3167C	AL3167F	
MDM2 Binding	AL3168C	AL3168F	
CTLA4/CD80	AL3046C	AL3046F	
CTLA4/CD86	AL3047C	AL3047F	
EGF/EGFR	AL366C	AL366F	AL366HV
FcGR1 (CD64)	AL3200C	AL3200F	
FcGR2A (CD32a), 167H	AL3086C	AL3086F	
FcGR2A (CD32a), 167R	AL3087C	AL3087F	
FcGR2B (CD32b)	AL3080C	AL3080F	
FcGR3A (CD16a), 176Phe/F158	AL347C	AL347F	AL347HV
FcGR3A (CD16a), 176Val/V158	AL348C	AL348F	AL348HV
FcγR3B (CD16b)	AL3094C	AL3094F	
FcRn	AL3095C	AL3095F	
HLA-DRA/LAG-3	AL3066C	AL3066F	

Kits launched recently are highlighted in **bold and orange**.

AlphaLISA Binding Kits (continued...)

Product Description	Part Number	Part Number	Part Number
	500 Assay Points	5,000 Assay Points	100 Assay Points
KEAP1	AL3194C	AL3194F	
KRAS G12 GTP	AL3149C	AL3149F	
KRAS G12C/SOS1	AL3151C	AL3151F	
KRAS WT GTP	AL3148C	AL3148F	
KRAS WT/SOS1	AL3150C	AL3150F	
PD-1/PD-L1	AL356C	AL356F	AL356HV
PD-1/PD-L1 (cyno)	AL583C	AL583F	
PD-1/PD-L1 (mouse)	AL580C	AL580F	
PD-1/PD-L2	AL3128C	AL3128F	
PDGF-BB/PDGFR α	AL3064C	AL3064F	
PDGF-BB/PDGFR β	AL3065C	AL3065F	
PCSK9/LDLR	AL3132C	AL3132F	
RIG-I	AL3192C	AL3192F	
STING WT	AL3144C	AL3144F	
TNF α /TNFR2	AL3121C	AL3121F	
XIAP BIR2 Binding Kit	AL3172C	AL3172F	
XIAP BIR3 Binding Kit	AL3173C	AL3173F	

AlphaLISA Epigenetic Biochemical Assay Reagents

Product Description	Part Number	Part Number	Part Number
	250 μ g	5 mg	25 mg
Anti-acetyl-Histone H3 Lysine 9 (H3K9ac) Acceptor Beads	AL114C	AL114M	AL114R
Anti-methyl-Histone H3 Lysine 4 (H3K4me1-2) Acceptor Beads	AL116C	AL116M	AL116R
Anti-methyl-Histone H3 Lysine 9 (H3K9me2) Acceptor Beads	AL117C	AL117M	AL117R
Biotinylated anti-Histone H3 (C-ter) Antibody	AL118C	AL118M	AL118R
Anti-unmodified-Histone H3 Lysine 4 (H3K4) Acceptor Beads	AL119C	AL119M	AL119R
Anti-di/mono-methyl-Histone H3 Lysine 27 (H3K27me2-1) Acceptor Beads	AL121C	AL121M	AL121R
Anti-tri-methyl-Histone H3 Lysine 27 (H3K27me3) Acceptor Beads	AL122C	AL122M	AL122R
Anti-di-methyl-Histone H3 Lysine 36 (H3K36me2) Acceptor Beads	AL123C	AL123M	AL123R
Anti-methyl-Histone H3 Arginine 2 (H3R2me) Acceptor Beads	AL139C	AL139M	AL139R
Anti-Histone H3 (C-ter) Acceptor Beads	AL147C	AL147M	AL147R
Biotinylated anti-di-methyl-Histone H3 Lysine 79 (H3K79me2) Antibody	AL148C	AL148M	AL148R
Anti-acetyl-Histone H4 Lysine pan Acceptor Beads	AL143C	AL143M	AL143R
Biotinylated anti-Histone H4 Antibody	AL146C	AL146M	AL146R
Anti-methyl-Histone H4 Arginine 3 (H4R3me) Acceptor Beads	AL150C	AL150M	AL150R

Kits launched recently are highlighted in **bold and orange**.

AlphaLISA Epigenetic Biochemical Assay Reagents (continued...)

Product Description	Part Number		
	250 µg	5 mg	25 mg
Anti-methyl-Histone H3/H4 Arginine pan Acceptor Beads	AL151C	AL151M	AL151R
Anti-acetyl-p53 Lysine 382 (p53K382ac) Acceptor Beads	AL124C	AL124M	AL124R
Anti-O-GlcNAc Acceptor Beads	AL144C	AL144M	AL144R

AlphaLISA Epigenetic Cellular Detection Kits

Product Description	Part Number		
	500 Assay Points	5,000 Assay Points	100 Assay Points
Total H2a	AL725C	AL725F	AL725HV
Acetyl-Histone H3 Lysine 9 (H3K9ac)	AL714C	AL714F	AL714HV
Di-methyl-Histone H3 Lysine 4 (H3K4me2)	AL716C	AL716F	AL716HV
Di-methyl-Histone H3 Lysine 9 (H3K9me2)	AL717C	AL717F	AL717HV
Unmodified Histone H3 Lysine 4 (H3K4)*	AL719C	AL719F	AL719HV
Di/mono-methyl-Histone H3 Lysine 27 (H3K27me2-1)	AL721C	AL721F	AL721HV
Tri-methyl-Histone H3 Lysine 27 (H3K27me3)	AL722C	AL722F	AL722HV
Di-methyl-Histone H3 Lysine 36 (H3K36me2)	AL723C	AL723F	AL723HV
Di-methyl-Histone H3 Lysine 79 (H3K79me2)	AL748C	AL748F	AL748HV

* Suitable for measuring total H3 content

Alpha SureFire Ultra Kits

The AlphaLISA *SureFire Ultra* kits contain all the reagents necessary to measure a phosphoprotein, or the corresponding total protein in parallel from a separate well.

The Alpha *SureFire Ultra* Multiplex dual targets kits contain all the reagents necessary to measure two targets from the same well, using the AlphaPlex technology.

The Alpha terbium *SureFire Ultra* kits are intended to be combined with some AlphaLISA *SureFire Ultra* kits in order to multiplex the measurement of two analytes. The terbium *SureFire Ultra* kits include the antibody-containing Reaction Buffers and the beads and cannot be used as standalone kits because the cell lysis buffer, the activation buffer and the dilution buffer are provided only in the AlphaLISA *SureFire Ultra* kits.

If you need a target in the AlphaLISA *SureFire Ultra* or in the terbium *SureFire Ultra* format and do not find it in the listing below, please contact us - we may already have developed it recently. We would also be happy to discuss the possibility of doing this on a custom basis. All kits are available in three sizes for immunoassays to be performed in 384-well plate format, and the *Ultra* are also available in "High Volume" format: these kits contain 100 data points, in a convenient 96-well plate assay format, for low throughput applications.

Alphabetical Listing of Alpha SureFire Ultra Products

Product Description	Part Number			
	AlphaLISA <i>SureFire Ultra</i>			
	500 Assay Points	10,000 Assay Points	50,000 Assay Points	100 Assay Points
4E-BP1, Phospho-T37/46	ALSU-P4EBP-A500	ALSU-P4EBP-A10K	ALSU-P4EBP-A50K	ALSU-P4EBP-A-HV
4E-BP1, Total	ALSU-T4EBP-A500	ALSU-T4EBP-A10K	ALSU-T4EBP-A50K	ALSU-T4EBP-A-HV
CoA carboxylase, acetyl, Phospho-S79	ALSU-PACC-A500	ALSU-PACC-A10K	ALSU-PACC-A50K	ALSU-PACC-A-HV
CoA carboxylase, acetyl, Total	ALSU-TACC-A500	ALSU-TACC-A10K	ALSU-TACC-A50K	ALSU-TACC-A-HV

Kits launched recently are highlighted in **bold and orange**.

Alphabetical Listing of Alpha SureFire Ultra Products (continued...)

Product Description	Part Number			
	AlphaLISA SureFire Ultra			
	500 Assay Points	10,000 Assay Points	50,000 Assay Points	100 Assay Points
AIOLOS, Total	ALSU-TAIOL-A500	ALSU-TAIOL-A10K	ALSU-TAIOL-A50K	ALSU-TAIOL-A-HV
AKT1, Phospho-S129	ALSU-PAKT1-D500	ALSU-PAKT1-D10K	ALSU-PAKT1-D50K	ALSU-PAKT1-D-HV
Akt1, Phospho-S473	ALSU-PAKT1-C500	ALSU-PAKT1-C10K	ALSU-PAKT1-C50K	ALSU-PAKT1-C-HV
Akt1, Total	ALSU-TAKT1-B500	ALSU-TAKT1-B10K	ALSU-TAKT1-B50K	ALSU-TAKT1-B-HV
AKT2, Phospho-S474	ALSU-PAKT2-A500	ALSU-PAKT2-A10K	ALSU-PAKT2-A50K	ALSU-PAKT2-A-HV
AKT2, Total	ALSU-TAKT2-A500	ALSU-TAKT2-A10K	ALSU-TAKT2-A50K	ALSU-TAKT2-A-HV
AKT3, Phospho-S472	ALSU-PAKT3-A500	ALSU-PAKT3-A10K	ALSU-PAKT3-A50K	ALSU-PAKT3-A-HV
AKT3, Total	ALSU-TAKT3-A500	ALSU-TAKT3-A10K	ALSU-TAKT3-A10K	ALSU-TAKT3-A-HV
Akt1/2/3, Phospho-T308	ALSU-PAKT-A500	ALSU-PAKT-A10K	ALSU-PAKT-A50K	ALSU-PAKT-A-HV
AKT 1/2/3, Phospho-T450	ALSU-PAKT-C500	ALSU-PAKT-C10K	ALSU-PAKT-C50K	ALSU-PAKT-C-HV
Akt1/2/3, Phospho-S473	ALSU-PAKT-B500	ALSU-PAKT-B10K	ALSU-PAKT-B50K	ALSU-PAKT-B-HV
Akt1/2/3, Total	ALSU-TAKT-B500	ALSU-TAKT-B10K	ALSU-TAKT-B50K	ALSU-TAKT-B-HV
ALK, Phospho-Y1586	ALSU-PALK-A500	ALSU-PALK-A10K	ALSU-PALK-A50K	ALSU-PALK-A-HV
ALK, Phospho-Y1604	ALSU-PALK-C500	ALSU-PALK-C10K	ALSU-PALK-C50K	ALSU-PALK-C-HV
ALK, Total	ALSU-TALK-A500	ALSU-TALK-A10K	ALSU-TALK-A50K	ALSU-TALK-A-HV
Alpha-synuclein, Aggregagated	ALSU-AASYN-A500	ALSU-AASYN-A10K	ALSU-AASYN-A50K	ALSU-AASYN-A-HV
Alpha-synuclein, Phospho-S129	ALSU-PASYN-B500	ALSU-PASYN-B10K	ALSU-PASYN-B50K	ALSU-PASYN-B-HV
Alpha-Synuclein, Aggregated Phospho-S129	ALSU-APASYN-A500	ALSU-APASYN-A10K	ALSU-APASYN-A50K	ALSU-APASYN-A-HV
Alpha-synuclein, Total	ALSU-TASYN-B500	ALSU-TASYN-B10K	ALSU-TASYN-B50K	ALSU-TASYN-B-HV
AMPK α 1/2, Phospho-T172	ALSU-PAMPK-A500	ALSU-PAMPK-A10K	ALSU-PAMPK-A50K	ALSU-PAMPK-A-HV
AMPK α 1/2, Total	ALSU-TAMPK-A500	ALSU-TAMPK-A10K	ALSU-TAMPK-A50K	ALSU-TAMPK-A-HV
Androgen Receptor, Total	ALSU-TANDR-A500	ALSU-TANDR-A10K	ALSU-TANDR-A50K	ALSU-TANDR-A-HV
ARID1A, Total	ALSU-TARID-A500	ALSU-TARID-A10K	ALSU-TARID-A50K	ALSU-TARID-A-HV
ATF-2, Phospho-T71	ALSU-PATF2-A500	ALSU-PATF2-A10K	ALSU-PATF2-A50K	ALSU-PATF2-A-HV
ATF-2, Total	ALSU-TATF2-A500	ALSU-TATF2-A10K	ALSU-TATF2-A50K	ALSU-TATF2-A-HV
ATF-4, Total	ALSU-TATF4-A500	ALSU-TATF4-A10K	ALSU-TATF4-A50K	ALSU-TATF4-A-HV
ATG14, Phospho-S29	ALSU-PATG14-A500	ALSU-PATG14-A10K	ALSU-PATG14-A50K	ALSU-PATG14-A-HV
ATG16L1, Phospho-S278	ALSU-PATG-A500	ALSU-PATG-A10K	ALSU-PATG-A50K	ALSU-PATG-A-HV
ATG16L1, Total	ALSU-TATG-A500	ALSU-TATG-A10K	ALSU-TATG-A50K	ALSU-TATG-A-HV
ATM, Phospho-S1981	ALSU-PATM-A500	ALSU-PATM-A10K	ALSU-PATM-A50K	ALSU-PATM-A-HV
ATM, Total	ALSU-TATM-A500	ALSU-TATM-A10K	ALSU-TATM-A50K	ALSU-TATM-A-HV
Aurora A, Phospho-T288	ALSU-PAURA-A500	ALSU-PAURA-A10K	ALSU-PAURA-A50K	ALSU-PAURA-A-HV
Aurora A, Total	ALSU-TAURA-A500	ALSU-TAURA-A10K	ALSU-TAURA-A50K	ALSU-TAURA-A-HV
Aurora B, Phospho-T232	ALSU-PAURB-A500	ALSU-PAURB-A10K	ALSU-PAURB-A50K	ALSU-PAURB-A-HV
Aurora B, Total	ALSU-TAURB-A500	ALSU-TAURB-A10K	ALSU-TAURB-A50K	ALSU-TAURB-A-HV
AXIN-1, Total	ALSU-TAXIN1-A500	ALSU-TAXIN1-A10K	ALSU-TAXIN1-A50K	ALSU-TAXIN1-A-HV
AXIN-2, Total	ALSU-TAXIN2-A500	ALSU-TAXIN2-A10K	ALSU-TAXIN2-A50K	ALSU-TAXIN2-A-HV
AXL, Phospho-Y702	ALSU-PAXL-A500	ALSU-PAXL-A10K	ALSU-PAXL-A50K	ALSU-PAXL-A-HV
AXL, Total	ALSU-TAXL-A500	ALSU-TAXL-A10K	ALSU-TAXL-A50K	ALSU-TAXL-A-HV
β -Catenin, Phospho-S37	ALSU-PBCAT-A500	ALSU-PBCAT-A10K	ALSU-PBCAT-A50K	ALSU-PBCAT-A-HV
β -Catenin, Phospho-T41/S45	ALSU-PBCAT-B500	ALSU-PBCAT-B10K	ALSU-PBCAT-B50K	ALSU-PBCAT-B-HV
β -Catenin, Phospho-S675	ALSU-PBCAT-C500	ALSU-PBCAT-C10K	ALSU-PBCAT-C50K	ALSU-PBCAT-C-HV

Kits launched recently are highlighted in bold and orange.

Alphabetical Listing of Alpha SureFire Ultra Products (continued...)

Product Description	Part Number			
	AlphaLISA SureFire Ultra			
	500 Assay Points	10,000 Assay Points	50,000 Assay Points	100 Assay Points
β-Catenin, Total	ALSU-TBCAT-A500	ALSU-TBCAT-A10K	ALSU-TBCAT-A50K	ALSU-TBCAT-A-HV
BAD, Phospho-S112	ALSU-PBAD-A500	ALSU-PBAD-A10K	ALSU-PBAD-A50K	ALSU-PBAD-A-HV
BAD, Phospho-S136	ALSU-PBAD-B500	ALSU-PBAD-B10K	ALSU-PBAD-B50K	ALSU-PBAD-B-HV
BAD, Total	ALSU-TBAD-A500	ALSU-TBAD-A10K	ALSU-TBAD-A50K	ALSU-TBAD-A-HV
BCL-2, Phospho-S70	ALSU-PBCL2-A500	ALSU-PBCL2-A10K	ALSU-PBCL2-A50K	ALSU-PBCL2-A-HV
BCL-2, Total	ALSU-TBCL2-A500	ALSU-TBCL2-A10K	ALSU-TBCL2-A50K	ALSU-TBCL2-A-HV
BCL-XL	ALSU-TBCLXL-A500	ALSU-TBCLXL-A10K	ALSU-TBCLXL-A50K	ALSU-TBCLXL-A-HV
Beclin-1, Total	ALSU-TBEC-A500	ALSU-TBEC-A10K	ALSU-TBEC-A50K	ALSU-TBEC-A-HV
B-Raf, Phospho-S446	ALSU-PBRAFA-A500	ALSU-PBRAFA-A10K	ALSU-PBRAFA-A50K	ALSU-PBRAFA-A-HV
B-Raf, Total	ALSU-TBRAFA-A500	ALSU-TBRAFA-A10K	ALSU-TBRAFA-A50K	ALSU-TBRAFA-A-HV
BRD2, Phospho-S37	ALSU-PBRD2-A500	ALSU-PBRD2-A10K	ALSU-PBRD2-A50K	ALSU-PBRD2-A-HV
BRD2, Total	ALSU-TBRD2-A500	ALSU-TBRD2-A10K	ALSU-TBRD2-A50K	ALSU-TBRD2-A-HV
BRD3, Total	ALSU-TBRD3-A500	ALSU-TBRD3-A10K	ALSU-TBRD3-A50K	ALSU-TBRD3-A-HV
BRD4, Total	ALSU-TBRD4-A500	ALSU-TBRD4-A10K	ALSU-TBRD4-A50K	ALSU-TBRD4-A-HV
BRD7, Total	ALSU-TBRD7-A500	ALSU-TBRD7-A10K	ALSU-TBRD7-A50K	ALSU-TBRD7-A-HV
BRD9, Total	ALSU-TBRD9-A500	ALSU-TBRD9-A10K	ALSU-TBRD9-A50K	ALSU-TBRD9-A-HV
BTK, Phospho-Y223	ALSU-PBTK-A500	ALSU-PBTK-A10K	ALSU-PBTK-A50K	ALSU-PBTK-A-HV
BTK, Phospho-Y551	ALSU-PBTK-B500	ALSU-PBTK-B10K	ALSU-PBTK-B50K	ALSU-PBTK-B-HV
BTK, Total	ALSU-TBTK-A500	ALSU-TBTK-A10K	ALSU-TBTK-A50K	ALSU-TBTK-A-HV
CaMKII, Phospho-T286	ALSU-PCAM-A500	ALSU-PCAM-A10K	ALSU-PCAM-A50K	ALSU-PCAM-A-HV
CaMKII, Total	ALSU-TCAM-A500	ALSU-TCAM-A10K	ALSU-TCAM-A50K	ALSU-TCAM-A-HV
Caspase3 Cleaved D175	ALSU-CCASP3-A500	ALSU-CCASP3-A10K	ALSU-CCASP3-A50K	ALSU-CCASP3-A-HV
Caspase3, Total	ALSU-TCASP3-A500	ALSU-TCASP3-A10K	ALSU-TCASP3-A50K	ALSU-TCASP3-A-HV
CD3 Zeta, Phospho-Y142	ALSU-PCD3-B500	ALSU-PCD3-B10K	ALSU-PCD3-B50K	ALSU-PCD3-B-HV
CD3 Zeta, Phospho-Y83	ALSU-PCD3-A500	ALSU-PCD3-A10K	ALSU-PCD3-A50K	ALSU-PCD3-A-HV
CD3 Zeta, Total	ALSU-TCD3-A500	ALSU-TCD3-A10K	ALSU-TCD3-A50K	ALSU-TCD3-A-HV
CDC25C, Phospho-S216	ALSU-PCDC25-A500	ALSU-PCDC25-A10K	ALSU-PCDC25-A50K	ALSU-PCDC25-A-HV
CDC25C, Total	ALSU-TCDC25-A500	ALSU-TCDC25-A10K	ALSU-TCDC25-A50K	ALSU-TCDC25-A-HV
CDC6, Phospho-S54	ALSU-PCDC6-A500	ALSU-PCDC6-A10K	ALSU-PCDC6-A50K	ALSU-PCDC6-A-HV
CDC6, Phospho-S106	ALSU-PCDC6-B500	ALSU-PCDC6-B10K	ALSU-PCDC6-B50K	ALSU-PCDC6-B-HV
CDC6, Total	ALSU-TCDC6-A500	ALSU-TCDC6-A10K	ALSU-TCDC6-A50K	ALSU-TCDC6-A-HV
CDK1, Phospho-T14	ALSU-PCDK1-A500	ALSU-PCDK1-A10K	ALSU-PCDK1-A50K	ALSU-PCDK1-A-HV
CDK1, Phospho-Y15	ALSU-PCDK1-B500	ALSU-PCDK1-B10K	ALSU-PCDK1-B50K	ALSU-PCDK1-B-HV
CDK1, Phospho-T161	ALSU-PCDK1-C500	ALSU-PCDK1-C10K	ALSU-PCDK1-C50K	ALSU-PCDK1-C-HV
CDK1, Total	ALSU-TCDK1-A500	ALSU-TCDK1-A10K	ALSU-TCDK1-A50K	ALSU-TCDK1-A-HV
CDK2, Phospho-T160	ALSU-PCDK2-A500	ALSU-PCDK2-A10K	ALSU-PCDK2-A50K	ALSU-PCDK2-A-HV
CDK2, Total	ALSU-TCDK2-A500	ALSU-TCDK2-A10K	ALSU-TCDK2-A50K	ALSU-TCDK2-A-HV
CDK4, Total	ALSU-TCDK4-A500	ALSU-TCDK4-A10K	ALSU-TCDK4-A50K	ALSU-TCDK4-A-HV
CDK5, Total	ALSU-TCDK5-A500	ALSU-TCDK5-A10K	ALSU-TCDK5-A50K	ALSU-TCDK5-A-HV
CDK6, Total	ALSU-TCDK6-A500	ALSU-TCDK6-A10K	ALSU-TCDK6-A50K	ALSU-TCDK6-A-HV
CDK7, Total	ALSU-TCDK7-A500	ALSU-TCDK7-A10K	ALSU-TCDK7-A50K	ALSU-TCDK7-A-HV
CDK8, Total	ALSU-TCDK8-A500	ALSU-TCDK8-A10K	ALSU-TCDK8-A50K	ALSU-TCDK8-A-HV
CDK9, Total	ALSU-TCDK9-A500	ALSU-TCDK9-A10K	ALSU-TCDK9-A50K	ALSU-TCDK9-A-HV

Kits launched recently are highlighted in bold and orange.

Alphabetical Listing of Alpha SureFire Ultra Products (continued...)

Product Description	Part Number			
	AlphaLISA SureFire Ultra			
	500 Assay Points	10,000 Assay Points	50,000 Assay Points	100 Assay Points
CDK12, Total	ALSU-TCDK12-A500	ALSU-TCDK12-A10K	ALSU-TCDK12-A50K	ALSU-TCDK12-A-HV
CHK1, Phospho-S345	ALSU-PCHK1-A500	ALSU-PCHK1-A10K	ALSU-PCHK1-A50K	ALSU-PCHK1-A-HV
CHK1, Total	ALSU-TCHK1-A500	ALSU-TCHK1-A10K	ALSU-TCHK1-A50K	ALSU-TCHK1-A-HV
CHK2, Phospho-T68	ALSU-PCHK2-A500	ALSU-PCHK2-A10K	ALSU-PCHK2-A50K	ALSU-PCHK2-A-HV
CHK2, Total	ALSU-TCHK2-A500	ALSU-TCHK2-A10K	ALSU-TCHK2-A50K	ALSU-TCHK2-A-HV
CHOP1, Total	ALSU-TCHOP-A500	ALSU-TCHOP-A10K	ALSU-TCHOP-A50K	ALSU-TCHOP-A-HV
c-FOS, Phospho-S32	ALSU-PCFOS-A500	ALSU-PCFOS-A10K	ALSU-PCFOS-A50K	ALSU-PCFOS-A-HV
c-FOS, Total	ALSU-TCFOS-A500	ALSU-TCFOS-A10K	ALSU-TCFOS-A50K	ALSU-TCFOS-A-HV
c-Jun, Phospho-S63	ALSU-PCJUN-A500	ALSU-PCJUN-A10K	ALSU-PCJUN-A50K	ALSU-PCJUN-A-HV
c-Jun, Phospho-S73	ALSU-PCJUN-B500	ALSU-PCJUN-B10K	ALSU-PCJUN-B50K	ALSU-PCJUN-B-HV
c-Jun, Total	ALSU-TCJUN-A500	ALSU-TCJUN-A10K	ALSU-TCJUN-A50K	ALSU-TCJUN-A-HV
c-Kit, Phospho-Y703	ALSU-PCKIT-A500	ALSU-PCKIT-A10K	ALSU-PCKIT-A50K	ALSU-PCKIT-A-HV
c-Kit, Total	ALSU-TCKIT-A500	ALSU-TCKIT-A10K	ALSU-TCKIT-A50K	ALSU-TCKIT-A-HV
c-Met, Phospho-Y1234/1235	ALSU-PCMET-A500	ALSU-PCMET-A10K	ALSU-PCMET-A50K	ALSU-PCMET-A-HV
c-Met, Total	ALSU-TCMET-A500	ALSU-TCMET-A10K	ALSU-TCMET-A50K	ALSU-TCMET-A-HV
c-Myb, Phospho-S11	ALSU-PCMYB-A500	ALSU-PCMYB-A10K	ALSU-PCMYB-A50K	ALSU-PCMYB-A-HV
c-Myb, Total	ALSU-TCMYB-A500	ALSU-TCMYB-A10K	ALSU-TCMYB-A50K	ALSU-TCMYB-A-HV
c-Myc, Phospho-S62	ALSU-PCMYC-A500	ALSU-PCMYC-A10K	ALSU-PCMYC-A50K	ALSU-PCMYC-A-HV
c-Myc, Phospho-T58	ALSU-PCMYC-B500	ALSU-PCMYC-B10K	ALSU-PCMYC-B50K	ALSU-PCMYC-B-HV
c-Myc, Total	ALSU-TCMYC-A500	ALSU-TCMYC-A10K	ALSU-TCMYC-A50K	ALSU-TCMYC-A-HV
Cofilin, Phospho-S3	ALSU-PCOF-A500	ALSU-PCOF-A10K	ALSU-PCOF-A50K	ALSU-PCOF-A-HV
Cofilin, Total	ALSU-TCOF-A500	ALSU-TCOF-10K	ALSU-TCOF-50K	ALSU-TCOF-A-HV
CREB-1, Phospho-S133	ALSU-PCREB-A500	ALSU-PCREB-A10K	ALSU-PCREB-A50K	ALSU-PCREB-A-HV
CREB-1, Total	ALSU-TCREB-A500	ALSU-TCREB-A10K	ALSU-TCREB-A50K	ALSU-TCREB-A-HV
CREBBP, Total	ALSU-TCRBP-A500	ALSU-TCRBP-A10K	ALSU-TCRBP-A50K	ALSU-TCRBP-A-HV
CSF1R, Phospho-Y561	ALSU-PCSF1R-A500	ALSU-PCSF1R-A10K	ALSU-PCSF1R-A50K	ALSU-PCSF1R-A-HV
CSF1R, Phospho-Y699	ALSU-PCSF1R-B500	ALSU-PCSF1R-B10K	ALSU-PCSF1R-B50K	ALSU-PCSF1R-B-HV
CSF1R, Phospho-Y708	ALSU-PCSF1R-C500	ALSU-PCSF1R-C10K	ALSU-PCSF1R-C50K	ALSU-PCSF1R-C-HV
CSF1R, Phospho-Y723	ALSU-PCSF1R-D500	ALSU-PCSF1R-D10K	ALSU-PCSF1R-D50K	ALSU-PCSF1R-D-HV
CSF1R, Total	ALSU-TCSF1R-A500	ALSU-TCSF1R-A10K	ALSU-TCSF1R-A50K	ALSU-TCSF1R-A-HV
Cyclin A2, Total	ALSU-TCYCA2-A500	ALSU-TCYCA2-A10K	ALSU-TCYCA2-A50K	ALSU-TCYCA2-A-HV
Cyclin B1, Phospho-S126	ALSU-PCYCB1-A500	ALSU-PCYCB1-A10K	ALSU-PCYCB1-A50K	ALSU-PCYCB1-A-HV
Cyclin B1, Total	ALSU-TCYCB1-A500	ALSU-TCYCB1-A10K	ALSU-TCYCB1-A50K	ALSU-TCYCB1-A-HV
Cyclin D1, Phospho-T286	ALSU-PCYCD1-A500	ALSU-PCYCD1-A10K	ALSU-PCYCD1-A50K	ALSU-PCYCD1-A-HV
Cyclin D1, Total	ALSU-TCYCD1-A500	ALSU-TCYCD1-A10K	ALSU-TCYCD1-A50K	ALSU-TCYCD1-A-HV
Cyclin D2, Total	ALSU-TCYCD2-A500	ALSU-TCYCD2-A10K	ALSU-TCYCD2-A50K	ALSU-TCYCD2-A-HV
Cyclin D3, Total	ALSU-TCYCD3-A500	ALSU-TCYCD3-A10K	ALSU-TCYCD3-A50K	ALSU-TCYCD3-A-HV
Cyclin E1, Phospho-T77	ALSU-PCYCE1-A500	ALSU-PCYCE1-A10K	ALSU-PCYCE1-A50K	ALSU-PCYCE1-A-HV
Cyclin E1, Total	ALSU-TCYCE1-A500	ALSU-TCYCE1-A10K	ALSU-TCYCE1-A50K	ALSU-TCYCE1-A-HV
DAP12, Phospho-Y91	ALSU-PDAP12-B500	ALSU-PDAP12-B10K	ALSU-PDAP12-B50K	ALSU-PDAP12-B-HV
DAP12, Phospho-Y92 (Mouse)	ALSU-PDAP12-C500	ALSU-PDAP12-C10K	ALSU-PDAP12-C50K	ALSU-PDAP12-C-HV
DAP12, Phospho-panY	ALSU-PDAP12-A500	ALSU-PDAP12-A10K	ALSU-PDAP12-A50K	ALSU-PDAP12-A-HV

Kits launched recently are highlighted in bold and orange.

Alphabetical Listing of Alpha SureFire Ultra Products (continued...)

Product Description	Part Number			
	AlphaLISA SureFire Ultra			
	500 Assay Points	10,000 Assay Points	50,000 Assay Points	100 Assay Points
DAP12 Aggregate	ALSU-ADAP12-A500	ALSU-ADAP12-A10K	ALSU-ADAP12-A50K	ALSU-ADAP12-A-HV
DAP12, Total	ALSU-TDAP12-A500	ALSU-TDAP12-A10K	ALSU-TDAP12-A50K	ALSU-TDAP12-A-HV
DAP12, Total (Mouse)	ALSU-TDAP12-B500	ALSU-TDAP12-B10K	ALSU-TDAP12-B50K	ALSU-TDAP12-B-HV
DDR1, Phospho-Y513	ALSU-PDDR1-A500	ALSU-PDDR1-A10K	ALSU-PDDR1-A50K	ALSU-PDDR1-A-HV
DDR1, Phospho-Y796	ALSU-PDDR1-B500	ALSU-PDDR1-B10K	ALSU-PDDR1-B50K	ALSU-PDDR1-B-HV
DDR1, Total	ALSU-TDDR1-A500	ALSU-TDDR1-A10K	ALSU-TDDR1-A50K	ALSU-TDDR1-A-HV
DDR2, Phospho-Y740	ALSU-PDDR2-A500	ALSU-PDDR2-A10K	ALSU-PDDR2-A50K	ALSU-PDDR2-A-HV
DDR2, Total	ALSU-TDDR2-A500	ALSU-TDDR2-A10K	ALSU-TDDR2-A50K	ALSU-TDDR2-A-HV
DJ1, Total	ALSU-TDJ1-A500	ALSU-TDJ1-A10K	ALSU-TDJ1-A50K	ALSU-TDJ1-A-HV
DNA PKcs, Phospho-S2056	ALSU-PDNA-A500	ALSU-PDNA-A10K	ALSU-PDNA-A50K	ALSU-PDNA-A-HV
DNA PKcs, Total	ALSU-TDNA-A500	ALSU-TDNA-A10K	ALSU-TDNA-A50K	ALSU-TDNA-A-HV
EGF Receptor, Phospho-Y1068	ALSU-PEGFR-B500	ALSU-PEGFR-B10K	ALSU-PEGFR-B50K	ALSU-PEGFR-B-HV
EGF Receptor, Total	ALSU-TEGFR-A500	ALSU-TEGFR-A10K	ALSU-TEGFR-A50K	ALSU-TEGFR-A-HV
EGF Receptor L858R, Total	ALSU-TEGFR-B500	ALSU-TEGFR-B10K	ALSU-TEGFR-B50K	ALSU-TEGFR-B-HV
eiF2 α , Phospho-S51	ALSU-PEIF2-B500	ALSU-PEIF2-B10K	ALSU-PEIF2-B50K	ALSU-PEIF2-B-HV
TeiF2 α , Total	ALSU-TEIF2-A500	ALSU-TEIF2-A10K	ALSU-TEIF2-A50K	ALSU-TEIF2-A-HV
eiF4E, Phospho-S209	ALSU-PEIF4-A500	ALSU-PEIF4-A10K	ALSU-PEIF4-A50K	ALSU-PEIF4-A-HV
eiF4E, Total	ALSU-TEIF4-A500	ALSU-TEIF4-A10K	ALSU-TEIF4-A50K	ALSU-TEIF4-A-HV
eNOS, Phospho-S1177	ALSU-PENOS-A500	ALSU-PENOS-A10K	ALSU-PENOS-A50K	ALSU-PENOS-A-HV
eNOS, Phospho-T495	ALSU-PENOS-B500	ALSU-PENOS-B10K	ALSU-PENOS-B50K	ALSU-PENOS-B-HV
eNOS, Total	ALSU-TENOS-A500	ALSU-TENOS-A10K	ALSU-TENOS-A50K	ALSU-TENOS-A-HV
ER α , Phospho-S118	ALSU-PERA-A500	ALSU-PERA-A10K	ALSU-PERA-A50K	ALSU-PERA-A-HV
ER α , Phospho-S167	ALSU-PERA-B500	ALSU-PERA-B10K	ALSU-PERA-B50K	ALSU-PERA-B-HV
ER α , Total	ALSU-TERA-A500	ALSU-TERA-A10K	ALSU-TERA-A50K	ALSU-TERA-A-HV
ErbB2, Phospho- Y1221/1222	ALSU-PEB2-A500	ALSU-PEB2-A10K	ALSU-PEB2-A50K	ALSU-PEB2-A-HV
ErbB2, Total	ALSU-TEB2-A500	ALSU-TEB2-A10K	ALSU-TEB2-A50K	ALSU-TEB2-A-HV
ErbB3, Phospho-Y1289	ALSU-PERB3-A500	ALSU-PERB3-A10K	ALSU-PERB3-A50K	ALSU-PERB3-A-HV
ErbB3, Total	ALSU-TERB3-A500	ALSU-TERB3-A10K	ALSU-TERB3-A50K	ALSU-TERB3-A-HV
ERK1/2, Phospho-T202/ Y204	ALSU-PERK-A500	ALSU-PERK-A10K	ALSU-PERK-A50K	ALSU-PERK-A-HV
ERK1/2, Total	ALSU-TERK-A500	ALSU-TERK-A10K	ALSU-TERK-A50K	ALSU-TERK-A-HV
Ezrin/Moesin, Total	ALSU-TEM-A500	ALSU-TEM-A10K	ALSU-TEM-A50K	ALSU-TEM-A-HV
Ezrin/Radixin /Moesin, Phospho-T567/ T564/T558	ALSU-PERM-A500	ALSU-PERM-A10K	ALSU-PERM-A50K	ALSU-PERM-A-HV
FAK, Phospho-Y397	ALSU-PFAK-A500	ALSU-PFAK-A10K	ALSU-PFAK-A50K	ALSU-PFAK-A-HV
FAK, Phospho-Y576/577	ALSU-PFAK-B500	ALSU-PFAK-B10K	ALSU-PFAK-B50K	ALSU-PFAK-B-HV
FAK, Total	ALSU-TFAK-A500	ALSU-TFAK-A10K	ALSU-TFAK-A50K	ALSU-TFAK-A-HV
FGF Receptor 1, Total	ALSU-TFGFR1-A500	ALSU-TFGFR1-A10K	ALSU-TFGFR1-A50K	ALSU-TFGFR1-A-HV
FGF Receptor 2, Phospho-Y653/654	ALSU-PFGFR2-A500	ALSU-PFGFR2-A10K	ALSU-PFGFR2-A50K	ALSU-PFGFR2-A-HV
FGF Receptor 2, Total	ALSU-TFGFR2-A500	ALSU-TFGFR2-A10K	ALSU-TFGFR2-A50K	ALSU-TFGFR2-A-HV
FGF Receptor 3, Phospho-panY	ALSU-PFGFR3-B500	ALSU-PFGFR3-B10K	ALSU-PFGFR3-B50K	ALSU-PFGFR3-B-HV
FGF Receptor 3, Phospho-Y724	ALSU-TFGFR2-A500	ALSU-PFGFR3-A10K	ALSU-TFGFR2-A50K	ALSU-PFGFR3-A-HV
FGF Receptor 3, Total	ALSU-TFGFR3-A500	ALSU-TFGFR3-A10K	ALSU-TFGFR3-A50K	ALSU-TFGFR3-A-HV
FGF Receptor 4, Total	ALSU-TFGFR4-A500	ALSU-TFGFR4-A10K	ALSU-TFGFR4-A50K	ALSU-TFGFR4-A-HV

Kits launched recently are highlighted in bold and orange.

Alphabetical Listing of Alpha SureFire Ultra Products (continued...)

Product Description	Part Number			
	AlphaLISA SureFire Ultra			
	500 Assay Points	10,000 Assay Points	50,000 Assay Points	100 Assay Points
FLT3, Phospho-Y591	ALSU-PFLT3-A500	ALSU-PFLT3-A10K	ALSU-PFLT3-A50K	ALSU-PFLT3-A-HV
FLT3, Phospho-Y842	ALSU-PFLT3-B500	ALSU-PFLT3-B10K	ALSU-PFLT3-B50K	ALSU-PFLT3-B-HV
FLT3, Total	ALSU-TFLT3-A500	ALSU-TFLT3-A10K	ALSU-TFLT3-A50K	ALSU-TFLT3-A-HV
FOXM1, Phospho-T600	ALSU-PFOX1-A500	ALSU-PFOX1-A10K	ALSU-PFOX1-A50K	ALSU-PFOX1-A-HV
FOXM1, Total	ALSU-TFOX1-A500	ALSU-TFOX1-A10K	ALSU-TFOX1-A50K	ALSU-TFOX1-A-HV
FOXO3A, Phospho-S253	ALSU-PFOXO3-A500	ALSU-PFOXO3-A10K	ALSU-PFOXO3-A50K	ALSU-PFOXO3-A-HV
FOXO3A, Total	ALSU-TFOXO3-A500	ALSU-TFOXO3-A10K	ALSU-TFOXO3-A50K	ALSU-TFOXO3-A-HV
GAPDH, Total	ALSU-TGAPD-A500	ALSU-TGAPD-A10K	ALSU-TGAPD-A50K	ALSU-TGAPD-A-HV
GAPDH, mouse and human, Total	ALSU-TGAPD-B500	ALSU-TGAPD-B10K	ALSU-TGAPD-B50K	ALSU-TGAPD-B-HV
GCN2, Phospho-T899	ALSU-PGCN2-A500	ALSU-PGCN2-A10K	ALSU-PGCN2-A50K	ALSU-PGCN2-A-HV
GCN2, Total	ALSU-TGCN2-A500	ALSU-TGCN2-A10K	ALSU-TGCN2-A50K	ALSU-TGCN2-A-HV
GSK3 β , Phospho-S9	ALSU-PGS3B-A500	ALSU-PGS3B-A10K	ALSU-PGS3B-A50K	ALSU-PGS3B-A-HV
GSK3 β , Total	ALSU-TGS3B-A500	ALSU-TGS3B-A10K	ALSU-TGS3B-A50K	ALSU-TGS3B-A-HV
GSPT1, Total	ALSU-TGSPT1-A500	ALSU-TGSPT1-A10K	ALSU-TGSPT1-A50K	ALSU-TGSPT1-A-HV
HDAC4, Phospho-S246	ALSU-PHDAC-A500	ALSU-PHDAC-A10K	ALSU-PHDAC-A50K	ALSU-PHDAC-A-HV
HDAC4, Total	ALSU-THDAC-A500	ALSU-THDAC-A10K	ALSU-THDAC-A50K	ALSU-THDAC-A-HV
HDAC5, Phospho-S259	ALSU-PHDAC5-A500	ALSU-PHDAC5-A10K	ALSU-PHDAC5-A50K	ALSU-PHDAC5-A-HV
HDAC5, Total	ALSU-THDAC5-A500	ALSU-THDAC5-A10K	ALSU-THDAC5-A50K	ALSU-THDAC5-A-HV
Histone H2X, Phospho-S139	ALSU-PH2X-A500	ALSU-PH2X-A10K	ALSU-PH2X-A50K	ALSU-PH2X-A-HV
Histone H2X, Total	ALSU-TH2X-A500	ALSU-TH2X-A10K	ALSU-TH2X-A50K	ALSU-TH2X-A-HV
Histone H3, Phospho-S10/T11	ALSU-PHISH3-A500	ALSU-PHISH3-A10K	ALSU-PHISH3-A50K	ALSU-PHISH3-A-HV
Histone H3, Total	ALSU-THISH3-A500	ALSU-THISH3-A10K	ALSU-THISH3-A50K	ALSU-THISH3-A-HV
HSP27, Phospho-S15	ALSU-PHSP-A500	ALSU-PHSP-A10K	ALSU-PHSP-A50K	ALSU-PHSP-A-HV
HSP27, Phospho-S78	ALSU-PHSP-C500	ALSU-PHSP-C10K	ALSU-PHSP-C50K	ALSU-PHSP-C-HV
HSP27, Phospho-S82	ALSU-PHSP-B500	ALSU-PHSP-B10K	ALSU-PHSP-B50K	ALSU-PHSP-B-HV
HSP27, Total	ALSU-THSP-A500	ALSU-THSP-A10K	ALSU-THSP-A50K	ALSU-THSP-A-HV
HSP90, Total	ALSU-THSP90-A500	ALSU-THSP90-A10K	ALSU-THSP90-A50K	ALSU-THSP90-A-HV
IGF-1 Receptor β , Phospho- Y1135/1136	ALSU-PIGFR-B500	ALSU-PIGFR-B10K	ALSU-PIGFR-B50K	ALSU-PIGFR-B-HV
IGF-1 Receptor β , Total	ALSU-TIGFR-A500	ALSU-TIGFR-A10K	ALSU-TIGFR-A50K	ALSU-TIGFR-A-HV
IKAROS, Total	ALSU-TIKARO-A500	ALSU-TIKARO-A10K	ALSU-TIKARO-A50K	ALSU-TIKARO-A-HV
I κ B α , Phospho-S32/36	ALSU-PIKBA-A500	ALSU-PIKBA-A10K	ALSU-PIKBA-A50K	ALSU-PIKBA-A-HV
I κ B α , Total	ALSU-TIKBA-A500	ALSU-TIKBA-A10K	ALSU-TIKBA-A50K	ALSU-TIKBA-A-HV
IKK α , Phospho-S176/180	ALSU-PIKKA-A500	ALSU-PIKKA-A10K	ALSU-PIKKA-A50K	ALSU-PIKKA-A-HV
IKK α , Total	ALSU-TIKKA-A500	ALSU-TIKKA-A10K	ALSU-TIKKA-A50K	ALSU-TIKKA-A-HV
IKK β , Phospho-S177/181	ALSU-PIKKB-A500	ALSU-PIKKB-A10K	ALSU-PIKKB-A50K	ALSU-PIKKB-A-HV
IKK β , Total	ALSU-TIKKB-A500	ALSU-TIKKB-A10K	ALSU-TIKKB-A50K	ALSU-TIKKB-A-HV
Insulin Receptor β , Phospho-Y1150/1151	ALSU-PINR-B500	ALSU-PINR-B10K	ALSU-PINR-B50K	ALSU-PINR-B-HV
Insulin Receptor β , Total	ALSU-TINR-A500	ALSU-TINR-A10K	ALSU-TINR-A50K	ALSU-TINR-A-HV
IRAK4, Phospho-T345/S346	ALSU-PIRAK-A500	ALSU-PIRAK-A10K	ALSU-PIRAK-A50K	ALSU-PIRAK-A-HV
IRAK4, Total	ALSU-TIRAK-A500	ALSU-TIRAK-A10K	ALSU-TIRAK-A50K	ALSU-TIRAK-A-HV
IRE1α, Phospho-S724	ALSU-PIRE1-A500	ALSU-PIRE1-A10K	ALSU-PIRE1-A50K	ALSU-PIRE1-A-HV
IRE1α, Total	ALSU-TIRE1-A500	ALSU-TIRE1-A10K	ALSU-TIRE1-A50K	ALSU-TIRE1-A-HV
IRF3, Phospho-S386	ALSU-PIRF3-A500	ALSU-PIRF3-A10K	ALSU-PIRF3-A50K	ALSU-PIRF3-A-HV

Kits launched recently are highlighted in bold and orange.

Alphabetical Listing of Alpha SureFire Ultra Products (continued...)

Product Description	Part Number			
	AlphaLISA SureFire Ultra			
	500 Assay Points	10,000 Assay Points	50,000 Assay Points	100 Assay Points
IRF3, Total	ALSU-TIRF3-A500	ALSU-TIRF3-A10K	ALSU-TIRF3-A50K	ALSU-TIRF3-A-HV
IRF5, Aggregate	ALSU-AIRF5-A500	ALSU-AIRF5-A10K	ALSU-AIRF5-A50K	ALSU-AIRF5-A-HV
IRF5, Phospho-S446	ALSU-PIRF5-A500	ALSU-PIRF5-A10K	ALSU-PIRF5-A50K	ALSU-PIRF5-A-HV
IRF5, Total	ALSU-TIRF5-A500	ALSU-TIRF5-A10K	ALSU-TIRF5-A50K	ALSU-TIRF5-A-HV
IRF7, Phospho-S477	ALSU-PIRF7-A500	ALSU-PIRF7-A10K	ALSU-PIRF7-A50K	ALSU-PIRF7-A-HV
IRF7, Total	ALSU-TIRF7-A500	ALSU-TIRF7-A10K	ALSU-TIRF7-A50K	ALSU-TIRF7-A-HV
IRF9, Total	ALSU-TIRF9-A500	ALSU-TIRF9-A10K	ALSU-TIRF9-A50K	ALSU-TIRF9-A-HV
IRF9, Total (Mouse)	ALSU-TIRF9-B500	ALSU-TIRF9-B10K	ALSU-TIRF9-B50K	ALSU-TIRF9-B-HV
IRS1, Phospho-S612	ALSU-PIRS1-A500	ALSU-PIRS1-A10K	ALSU-PIRS1-A50K	ALSU-PIRS1-A-HV
IRS1, Total	ALSU-TIRS1-A500	ALSU-TIRS1-A10K	ALSU-TIRS1-A50K	ALSU-TIRS1-A-HV
JAK1, Phospho-Y1034/1035	ALSU-PJAK1-B500	ALSU-PJAK1-B10K	ALSU-PJAK1-B50K	ALSU-PJAK1-B-HV
JAK1, Total	ALSU-TJAK1-A500	ALSU-TJAK1-A10K	ALSU-TJAK1-A50K	ALSU-TJAK1-A-HV
JAK2, Phospho-Y1008	ALSU-PJAK2-B500	ALSU-PJAK2-B10K	ALSU-PJAK2-B50K	ALSU-PJAK2-B-HV
JAK2, Total	ALSU-TJAK2-A500	ALSU-TJAK2-A10K	ALSU-TJAK2-A50K	ALSU-TJAK2-A-HV
JNK1/2/3, Phospho-T183/Y185	ALSU-PJNK-A500	ALSU-PJNK-A10K	ALSU-PJNK-A50K	ALSU-PJNK-A-HV
JNK1/2, Total	ALSU-TJNK-A500	ALSU-TJNK-A10K	ALSU-TJNK-A50K	ALSU-TJNK-A-HV
KAP1, Phospho-S824	ALSU-PKAP1-A500	ALSU-PKAP1-A10K	ALSU-PKAP1-A50K	ALSU-PKAP1-A-HV
KAP1, Total	ALSU-TKAP1-A500	ALSU-TKAP1-A10K	ALSU-TKAP1-A50K	ALSU-TKAP1-A-HV
KRAS, Total	ALSU-TKRAS-A500	ALSU-TKRAS-A10K	ALSU-TKRAS-A50K	ALSU-TKRAS-A-HV
Lamin A/C, Phospho-S22	ALSU-PLAM-A500	ALSU-PLAM-A10K	ALSU-PLAM-A50K	ALSU-PLAM-A-HV
Lamin A/C, Total	ALSU-TLAM-A500	ALSU-TLAM-A10K	ALSU-TLAM-A50K	ALSU-TLAM-A-HV
Lck, Phospho-Y505	ALSU-PLCK-A500	ALSU-PLCK-A10K	ALSU-PLCK-A50K	ALSU-PLCK-A-HV
Lck, Total	ALSU-TLCK-A500	ALSU-TLCK-A10K	ALSU-TLCK-A50K	ALSU-TLCK-A-HV
LRRK2, Phospho-S910	ALSU-PLRRK2-C500	ALSU-PLRRK2-C10K	ALSU-PLRRK2-C50K	ALSU-PLRRK2-C-HV
LRRK2, Phospho-S935	ALSU-PLRRK2-A500	ALSU-PLRRK2-A10K	ALSU-PLRRK2-A50K	ALSU-PLRRK2-A-HV
LRRK2, Phospho-S955	ALSU-PLRRK2-B500	ALSU-PLRRK2-B10K	ALSU-PLRRK2-B50K	ALSU-PLRRK2-B-HV
LRRK2, Total	ALSU-TLRRK2-A500	ALSU-TLRRK2-A10K	ALSU-TLRRK2-A50K	ALSU-TLRRK2-A-HV
MCL-1, Phospho-T163	ALSU-PMCL1-A500	ALSU-PMCL1-A10K	ALSU-PMCL1-A50K	ALSU-PMCL1-A-HV
MCL-1, Total	ALSU-TMCL1-A500	ALSU-TMCL1-A10K	ALSU-TMCL1-A50K	ALSU-TMCL1-A-HV
MDM2, Phospho-S166	ALSU-PMDM2-A500	ALSU-PMDM2-A10K	ALSU-PMDM2-A50K	ALSU-PMDM2-A-HV
MDM2, Total	ALSU-TMDM2-A500	ALSU-TMDM2-A10K	ALSU-TMDM2-A50K	ALSU-TMDM2-A-HV
MEK-1, Phospho-S218/222	ALSU-PMEK1-A500	ALSU-PMEK1-A10K	ALSU-PMEK1-A50K	ALSU-PMEK1-A-HV
MEK-1 Total	ALSU-TMEK1-A500	ALSU-TMEK1-A10K	ALSU-TMEK1-A50K	ALSU-TMEK1-A-HV
MEK2, Phospho-S217/221	ALSU-PMEK2-A500	ALSU-PMEK2-A10K	ALSU-PMEK2-A50K	ALSU-PMEK2-A-HV
MEK2, Total	ALSU-TMEK2-A500	ALSU-TMEK2-A10K	ALSU-TMEK2-A50K	ALSU-TMEK2-A-HV
MERTK, Phospho-Y749	ALSU-PMERTK-A500	ALSU-PMERTK-A10K	ALSU-PMERTK-A50K	ALSU-PMERTK-A-HV
MERTK, Total	ALSU-TMERTK-A500	ALSU-TMERTK-A10K	ALSU-TMERTK-A50K	ALSU-TMERTK-A-HV
MKK4, Phospho-S257	ALSU-PMKK4-A500	ALSU-PMKK4-A10K	ALSU-PMKK4-A50K	ALSU-PMKK4-A-HV
MKK4, Total	ALSU-TMKK4-A500	ALSU-TMKK4-A10K	ALSU-TMKK4-A50K	ALSU-TMKK4-A-HV
MLKL, Phospho S345 (mouse)	ALSU-PMLKL-A500	ALSU-PMLKL-A10K	ALSU-PMLKL-A50K	ALSU-PMLKL-A-HV
MLKL, Total (mouse)	ALSU-TMLKL-B500	ALSU-TMLKL-B10K	ALSU-TMLKL-B50K	ALSU-TMLKL-B-HV
MLKL, Phospho-S358	ALSU-PMLKL-B500	ALSU-PMLKL-B10K	ALSU-PMLKL-B50K	ALSU-PMLKL-B-HV
MLKL, Total	ALSU-TMLKL-A500	ALSU-TMLKL-A10K	ALSU-TMLKL-A50K	ALSU-TMLKL-A-HV

Kits launched recently are highlighted in bold and orange.

Alphabetical Listing of Alpha SureFire Ultra Products (continued...)

Product Description	Part Number			
	AlphaLISA SureFire Ultra			
	500 Assay Points	10,000 Assay Points	50,000 Assay Points	100 Assay Points
Moesin, Phospho-T558	ALSU-PMOES-A500	ALSU-PMOES-A10K	ALSU-PMOES-A50K	ALSU-PMOES-A-HV
Moesin, Total	ALSU-TMOES-A500	ALSU-TMOES-A10K	ALSU-TMOES-A50K	ALSU-TMOES-A-HV
MSH3, Total	ALSU-TMSH3-A500	ALSU-TMSH3-A10K	ALSU-TMSH3-A50K	ALSU-TMSH3-A-HV
mTOR, Phospho-S2448	ALSU-PMTOR-C500	ALSU-PMTOR-C10K	ALSU-PMTOR-C50K	ALSU-PMTOR-C-HV
mTOR, Total	ALSU-TMTOR-B500	ALSU-TMTOR-B10K	ALSU-TMTOR-B50K	ALSU-TMTOR-B-HV
MYD88, Total	ALSU-TMYD-A500	ALSU-TMYD-A10K	ALSU-TMYD-A50K	ALSU-TMYD-A-HV
Myogenin, Total	ALSU-TMYOG-A500	ALSU-TMYOG-A10K	ALSU-TMYOG-A50K	ALSU-TMYOG-A-HV
NFκB p65, Phospho-S536	ALSU-PNFKB-A500	ALSU-PNFKB-A10K	ALSU-PNFKB-A50K	ALSU-PNFKB-A-HV
NFκB p65, Total	ALSU-TNFKB-A500	ALSU-TNFKB-A10K	ALSU-TNFKB-A50K	ALSU-TNFKB-A-HV
NFκB2 p100/52, Total	ALSU-TNFKB2-A500	ALSU-TNFKB2-A10K	ALSU-TNFKB2-A50K	ALSU-TNFKB2-A-HV
NFκB2 p100, Total	ALSU-TNFKB2-B500	ALSU-TNFKB2-B10K	ALSU-TNFKB2-B50K	ALSU-TNFKB2-B-HV
NDRG1, Phospho-S330	ALSU-PNDRG1-A500	ALSU-PNDRG1-A10K	ALSU-PNDRG1-A50K	ALSU-PNDRG1-A-HV
NDRG1, Phospho-T346	ALSU-PNDRG1-B500	ALSU-PNDRG1-B10K	ALSU-PNDRG1-B50K	ALSU-PNDRG1-B-HV
NDRG1, Total	ALSU-TNDRG1-A500	ALSU-TNDRG1-A10K	ALSU-TNDRG1-A50K	ALSU-TNDRG1-A-HV
NPM, Phospho-T199	ALSU-PNPM-A500	ALSU-PNPM-A10K	ALSU-PNPM-A50K	ALSU-PNPM-A-HV
NPM, Total	ALSU-TNPM-A500	ALSU-TNPM-A10K	ALSU-TNPM-A50K	ALSU-TNPM-A-HV
Nrf2, Phospho-S40	ALSU-PNRF2-A500	ALSU-PNRF2-A10K	ALSU-PNRF2-A50K	ALSU-PNRF2-A-HV
Nrf2, Total	ALSU-TNRF2-A500	ALSU-TNRF2-A10K	ALSU-TNRF2-A50K	ALSU-TNRF2-A-HV
p16 INK4A, Total	ALSU-TP16INK4-A500	ALSU-TP16INK4-A10K	ALSU-TP16INK4-A50K	ALSU-TP16INK4-A-HV
p21 Cip1, Total	ALSU-TP21CIP-A500	ALSU-TP21CIP-A10K	ALSU-TP21CIP-A50K	ALSU-TP21CIP-A-HV
p27 KIP1, Phospho-S10	ALSU-PP27K-A500	ALSU-PP27K-A10K	ALSU-PP27K-A50K	ALSU-PP27K-A-HV
p27 KIP1, Total	ALSU-TP27K-A500	ALSU-TP27K-A10K	ALSU-TP27K-A50K	ALSU-TP27K-A-HV
p38 MAPK, Phospho-T180/ Y182	ALSU-PP38-B500	ALSU-PP38-B10K	ALSU-PP38-B50K	ALSU-PP38-B-HV
p38 MAPK, Total	ALSU-TP38-B500	ALSU-TP38-B10K	ALSU-TP38-B50K	ALSU-TP38-B-HV
p53, Acetyl (K382)	ALSU-ACP53-A500	ALSU-ACP53-A10K	ALSU-ACP53-A50K	ALSU-ACP53-A-HV
p53, Phospho-S15	ALSU-PP53-A500	ALSU-PP53-A10K	ALSU-PP53-A50K	ALSU-PP53-A-HV
p53, Total	ALSU-TP53-A500	ALSU-TP53-A10K	ALSU-TP53-A50K	ALSU-TP53-A-HV
p70S6K, Phospho-T389	ALSU-PP70-A500	ALSU-PP70-A10K	ALSU-PP70-A50K	ALSU-PP70-A-HV
p70S6K, Total	ALSU-TP70-A500	ALSU-TP70-A10K	ALSU-TP70-A50K	ALSU-TP70-A-HV
p300, Total	ALSU-TP300-A500	ALSU-TP300-A10K	ALSU-TP300-A50K	ALSU-TP300-A-HV
Parkin, Phospho-S65	ALSU-PPARK-A500	ALSU-PPARK-A10K	ALSU-PPARK-A50K	ALSU-PPARK-A-HV
Parkin, Total	ALSU-TPARK-A500	ALSU-TPARK-A10K	ALSU-TPARK-A50K	ALSU-TPARK-A-HV
PARP1 D214, Cleaved	ALSU-CPARP1-A500	ALSU-CPARP1-A10K	ALSU-CPARP1-A50K	ALSU-CPARP1-A-HV
PAX2, Total	ALSU-TPAX2-A500	ALSU-TPAX2-A10K	ALSU-TPAX2-A50K	ALSU-TPAX2-A-HV
PAX5, Total	ALSU-TPAX5-A500	ALSU-TPAX5-A10K	ALSU-TPAX5-A50K	ALSU-TPAX5-A-HV
PAX8, Total	ALSU-TPAX8-A500	ALSU-TPAX8-A10K	ALSU-TPAX8-A50K	ALSU-TPAX8-A-HV
Paxillin, Phospho-Y118	ALSU-PPAXIL-A500	ALSU-PPAXIL-A10K	ALSU-PPAXIL-A50K	ALSU-PPAXIL-A-HV
Paxillin, Total	ALSU-TPAXIL-A500	ALSU-TPAXIL-A10K	ALSU-TPAXIL-A50K	ALSU-TPAXIL-A-HV
PDI, Phospho-panY	ALSU-PPD1-A500	ALSU-PPD1-A10K	ALSU-PPD1-A50K	ALSU-PPD1-A-HV
PD-1, Total	ALSU-TPD1-A500	ALSU-TPD1-A10K	ALSU-TPD1-A50K	ALSU-TPD1-A-HV
PDGFRα, Phospho-Y720	ALSU-PPDGFA-A500	ALSU-PPDGFA-A10K	ALSU-PPDGFA-A50K	ALSU-PPDGFA-A-HV
PDGFRα, Total	ALSU-TPDGFA-A500	ALSU-TPDGFA-A10K	ALSU-TPDGFA-A50K	ALSU-TPDGFA-A-HV
PDGF, Phospho-Y751	ALSU-PPDGF-A500	ALSU-PPDGF-A10K	ALSU-PPDGF-A50K	ALSU-PPDGF-A-HV

Kits launched recently are highlighted in bold and orange.

Alphabetical Listing of Alpha SureFire Ultra Products (continued...)

Product Description	Part Number			
	AlphaLISA SureFire Ultra			
	500 Assay Points	10,000 Assay Points	50,000 Assay Points	100 Assay Points
PDGF, Total	ALSU-TPDGF-A500	ALSU-TPDGF-A10K	ALSU-TPDGF-A50K	ALSU-TPDGF-A-HV
PDHA1, Phospho-S293	ALSU-PPDHA1-A500	ALSU-PPDHA1-A10K	ALSU-PPDHA1-A50K	ALSU-PPDHA1-A-HV
PDHA1, Total	ALSU-TPDHA1-A500	ALSU-TPDHA1-A10K	ALSU-TPDHA1-A50K	ALSU-TPDHA1-A-HV
PERK, Phospho-T980 (mouse)	ALSU-PPERK-A500	ALSU-PPERK-A10K	ALSU-PPERK-A50K	ALSU-PPERK-A-HV
PERK, Phospho-T982	ALSU-PPERK-B500	ALSU-PPERK-B10K	ALSU-PPERK-B50K	ALSU-PPERK-B-HV
PERK, Total	ALSU-TPERK-A500	ALSU-TPERK-A10K	ALSU-TPERK-A50K	ALSU-TPERK-A-HV
PI3 Kinase p85, Phospho-Y458 (mouse)	ALSU-PP13K-A500	ALSU-PP13K-A10K	ALSU-PP13K-A50K	ALSU-PP13K-A-HV
PI3 Kinase p85, Phospho-Y467	ALSU-PPI3K-B500	ALSU-PPI3K-B10K	ALSU-PPI3K-B50K	ALSU-PPI3K-B-HV
PI3 Kinase p85, Total	ALSU-TPI3K-B500	ALSU-TPI3K-B10K	ALSU-TPI3K-B50K	ALSU-TPI3K-B-HV
PI3 Kinase p85, Total	ALSU-TP13K-A500	ALSU-TP13K-A10K	ALSU-TP13K-A50K	ALSU-TP13K-A-HV
PINK1, Total	ALSU-TPINK-A500	ALSU-TPINK-A10K	ALSU-TPINK-A50K	ALSU-TPINK-A-HV
PKC θ , Phospho-T538	ALSU-PPKC-A500	ALSU-PPKC-A10K	ALSU-PPKC-A50K	ALSU-PPKC-A-HV
PKCθ, Total	ALSU-TPKC-A500	ALSU-TPKC-A10K	ALSU-TPKC-A50K	ALSU-TPKC-A-HV
PKR, Phospho-T446	ALSU-PPKR-A500	ALSU-PPKR-A10K	ALSU-PPKR-A50K	ALSU-PPKR-A-HV
PKR, Phospho-T451	ALSU-PPKR-B500	ALSU-PPKR-B10K	ALSU-PPKR-B50K	ALSU-PPKR-B-HV
PKR, Total	ALSU-TPKR-A500	ALSU-TPKR-A10K	ALSU-TPKR-A50K	ALSU-TPKR-A-HV
PLC γ 1, Phospho-Y783	ALSU-PPLCG1-A500	ALSU-PPLCG1-A10K	ALSU-PPLCG1-A50K	ALSU-PPLCG1-A-HV
PLC γ 1, Phospho-S1248	ALSU-PPLCG1-B500	ALSU-PPLCG1-B10K	ALSU-PPLCG1-B50K	ALSU-PPLCG1-B-HV
PLC γ 1, Phospho-Y1253	ALSU-PPLCG1-C500	ALSU-PPLCG1-C10K	ALSU-PPLCG1-C50K	ALSU-PPLCG1-C-HV
PLC γ 1, Total	ALSU-TPLCG1-A500	ALSU-TPLCG1-A10K	ALSU-TPLCG1-A50K	ALSU-TPLCG1-A-HV
PLC γ 2, Phospho-Y753	ALSU-PPLCG2-A500	ALSU-PPLCG2-A10K	ALSU-PPLCG2-A50K	ALSU-PPLCG2-A-HV
PLC γ 2, Phospho-Y759	ALSU-PPLCG2-B500	ALSU-PPLCG2-B10K	ALSU-PPLCG2-B50K	ALSU-PPLCG2-B-HV
PLC γ 2, Phospho-Y1197	ALSU-PPLCG2-C500	ALSU-PPLCG2-C10K	ALSU-PPLCG2-C50K	ALSU-PPLCG2-C-HV
PLK1, Phospho-T210	ALSU-PPLK1-A500	ALSU-PPLK1-A10K	ALSU-PPLK1-A50K	ALSU-PPLK1-A-HV
PLK1, Total	ALSU-TPLK1-A500	ALSU-TPLK1-A10K	ALSU-TPLK1-A50K	ALSU-TPLK1-A-HV
PLC G2, Phospho-Y1217	ALSU-PPLCG2-D500	ALSU-PPLCG2-D10K	ALSU-PPLCG2-D50K	ALSU-PPLCG2-D-HV
PLC G2, Total	ALSU-TPLCG2-A500	ALSU-TPLCG2-A10K	ALSU-TPLCG2-A50K	ALSU-TPLCG2-A-HV
PRAS40, Phospho-T246	ALSU-PPRAS-A500	ALSU-PPRAS-A10K	ALSU-PPRAS-A50K	ALSU-PPRAS-A-HV
PRAS40, Total	ALSU-TPRAS-A500	ALSU-TPRAS-A10K	ALSU-TPRAS-A50K	ALSU-TPRAS-A-HV
Progesterone Receptor, Phospho-S190	ALSU-PPROGR-A500	ALSU-PPROGR-A10K	ALSU-PPROGR-A50K	ALSU-PPROGR-A-HV
Progesterone Receptor, Total	ALSU-TPROGR-A500	ALSU-TPROGR-A10K	ALSU-TPROGR-A50K	ALSU-TPROGR-A-HV
PTEN, Phospho-T366	ALSU-PPTEN-A500	ALSU-PPTEN-A10K	ALSU-PPTEN-A50K	ALSU-PPTEN-A-HV
PTEN, Total	ALSU-TPTEN-A500	ALSU-TPTEN-A10K	ALSU-TPTEN-A50K	ALSU-TPTEN-A-HV
RAB 8A, Phospho-S111	ALSU-PRAB8-A500	ALSU-PRAB8-A10K	ALSU-PRAB8-A50K	ALSU-PRAB8-A-HV
RAB 8A, Phospho-T72	ALSU-PRAB8-B500	ALSU-PRAB8-B10K	ALSU-PRAB8-B50K	ALSU-PRAB8-B-HV
RAB 8A, Total	ALSU-TRAB8-A500	ALSU-TRAB8-A10K	ALSU-TRAB8-A50K	ALSU-TRAB8-A-HV
RAB10, Phospho-T73	ALSU-PRAB-A500	ALSU-PRAB-A10K	ALSU-PRAB-A50K	ALSU-PRAB-A-HV
RAB10, Total	ALSU-TRAB-A500	ALSU-TRAB-A10K	ALSU-TRAB-A50K	ALSU-TRAB-A-HV
RAB12, Phospho-S106	ALSU-PRAB12-A500	ALSU-PRAB12-A10K	ALSU-PRAB12-A50K	ALSU-PRAB12-A-HV
RAB12, Total	ALSU-TRAB12-A500	ALSU-TRAB12-A10K	ALSU-TRAB12-A50K	ALSU-TRAB12-A-HV
RAB29, Phospho-S72	ALSU-PRAB29-A500	ALSU-PRAB29-A10K	ALSU-PRAB29-A50K	ALSU-PRAB29-A-HV
RAB29, Total	ALSU-TRAB29-A500	ALSU-TRAB29-A10K	ALSU-TRAB29-A50K	ALSU-TRAB29-A-HV

Kits launched recently are highlighted in bold and orange.

Alphabetical Listing of Alpha SureFire Ultra Products (continued...)

Product Description	Part Number			
	AlphaLISA SureFire Ultra			
	500 Assay Points	10,000 Assay Points	50,000 Assay Points	100 Assay Points
Raf-1, Phospho-S259	ALSU-PRAF-B500	ALSU-PRAF-B10K	ALSU-PRAF-B50K	ALSU-PRAF-B-HV
Raf-1, Phospho-S338	ALSU-PRAF-A500	ALSU-PRAF-A10K	ALSU-PRAF-A50K	ALSU-PRAF-A-HV
Raf-1, Total	ALSU-TRAF-A500	ALSU-TRAF-A10K	ALSU-TRAF-A50K	ALSU-TRAF-A-HV
RAPTOR, Total	ALSU-TRAPT-A500	ALSU-TRAPT-A10K	ALSU-TRAPT-A50K	ALSU-TRAPT-A-HV
Ras, Total	ALSU-TRAS-A500	ALSU-TRAS-A10K	ALSU-TRAS-A50K	ALSU-TRAS-A-HV
Rb, Phospho-S780	ALSU-PRB-C500	ALSU-PRB-C10K	ALSU-PRB-C50K	ALSU-PRB-C-HV
Rb, Phospho-S807/811	ALSU-PRB-A500	ALSU-PRB-A10K	ALSU-PRB-A50K	ALSU-PRB-A-HV
Rb, Phospho-T821/826	ALSU-PRB-B500	ALSU-PRB-B10K	ALSU-PRB-B50K	ALSU-PRB-B-HV
Rb, Phospho-T821	ALSU-PRB-D500	ALSU-PRB-D10K	ALSU-PRB-D50K	ALSU-PRB-D-HV
Rb, Phospho-T826	ALSU-PRB-E500	ALSU-PRB-E10K	ALSU-PRB-E50K	ALSU-PRB-E-HV
Rb, Total	ALSU-TRB-A500	ALSU-TRB-A10K	ALSU-TRB-A50K	ALSU-TRB-A-HV
RBM39, Total	ALSU-TRBM39-A500	ALSU-TRBM39-A10K	ALSU-TRBM39-A50K	ALSU-TRBM39-A-HV
Ret, Phospho-Y905	ALSU-PRET-B500	ALSU-PRET-B10K	ALSU-PRET-B50K	ALSU-PRET-B-HV
Ret, Phospho-panY	ALSU-PRET-A500	ALSU-PRET-A10K	ALSU-PRET-A50K	ALSU-PRET-A-HV
Ret, Total	ALSU-TRET-A500	ALSU-TRET-A10K	ALSU-TRET-A50K	ALSU-TRET-A-HV
Ribosomal Protein S6, Phospho-S235/236	ALSU-PS6R-B500	ALSU-PS6R-B10K	ALSU-PS6R-B50K	ALSU-PS6R-B-HV
Ribosomal Protein S6, Phospho-S240/244	ALSU-PS6R-A500	ALSU-PS6R-A10K	ALSU-PS6R-A50K	ALSU-PS6R-A-HV
Ribosomal Protein S6, Total	ALSU-TS6R-A500	ALSU-TS6R-A10K	ALSU-TS6R-A50K	ALSU-TS6R-A-HV
RIP3, Phospho-S227 (Human)	ALSU-PRIP3-A500	ALSU-PRIP3-A10K	ALSU-PRIP3-A50K	ALSU-PRIP3-A-HV
RIP3, Total (Human)	ALSU-TRIP3-A500	ALSU-TRIP3-A10K	ALSU-TRIP3-A50K	ALSU-TRIP3-A-HV
RIP3, Phospho-T231/S232 (Mouse)	ALSU-PRIP3-B500	ALSU-PRIP3-B10K	ALSU-PRIP3-B50K	ALSU-PRIP3-B-HV
RIP3, Total (Mouse)	ALSU-TRIP3-B500	ALSU-TRIP3-B10K	ALSU-TRIP3-B50K	ALSU-TRIP3-B-HV
RIPK1, Phospho-S166	ALSU-PRIPK1-A500	ALSU-PRIPK1-A10K	ALSU-PRIPK1-A50K	ALSU-PRIPK1-A-HV
RIPK1, Phospho-S320	ALSU-PRIPK1-B500	ALSU-PRIPK1-B10K	ALSU-PRIPK1-B50K	ALSU-PRIPK1-B-HV
RIPK1, Phospho-S321 (Mouse)	ALSU-PRIPK1-C500	ALSU-PRIPK1-C10K	ALSU-PRIPK1-C50K	ALSU-PRIPK1-C-HV
RIPK1, Total	ALSU-TRIPK1-A500	ALSU-TRIPK1-A10K	ALSU-TRIPK1-A50K	ALSU-TRIPK1-A-HV
RIPK1, Total (Mouse)	ALSU-TRIPK1-B500	ALSU-TRIPK1-B10K	ALSU-TRIPK1-B50K	ALSU-TRIPK1-B-HV
RNA POL II, Phospho-S2	ALSU-PRNAP-A500	ALSU-PRNAP-A10K	ALSU-PRNAP-A50K	ALSU-PRNAP-A-HV
RNA POL II, Phospho-S5	ALSU-PRNAP-B500	ALSU-PRNAP-B10K	ALSU-PRNAP-B50K	ALSU-PRNAP-B-HV
RNA POL II, Total	ALSU-TRNAP-A500	ALSU-TRNAP-A10K	ALSU-TRNAP-A50K	ALSU-TRNAP-A-HV
RSK1, Phospho-T359	ALSU-PRSK1-B500	ALSU-PRSK1-B10K	ALSU-PRSK1-B50K	ALSU-PRSK1-B-HV
RSK1, Phospho-S380	ALSU-PRSK1-C500	ALSU-PRSK1-C10K	ALSU-PRSK1-C50K	ALSU-PRSK1-C-HV
RSK1, Phospho-T573	ALSU-PRSK1-A500	ALSU-PRSK1-A10K	ALSU-PRSK1-A50K	ALSU-PRSK1-A-HV
RSK1, Total	ALSU-TRSK1-A500	ALSU-TRSK1-A10K	ALSU-TRSK1-A50K	ALSU-TRSK1-A-HV
SALL4, Total	ALSU-TSALL-A500	ALSU-TSALL-A10K	ALSU-TSALL-A50K	ALSU-TSALL-A-HV
SHP1, Phospho-Y536	ALSU-PSHP1-A500	ALSU-PSHP1-A10K	ALSU-PSHP1-A50K	ALSU-PSHP1-A-HV
SHP1, Phospho-Y564	ALSU-PSHP1-B500	ALSU-PSHP1-B10K	ALSU-PSHP1-B50K	ALSU-PSHP1-B-HV
SHP1, Total	ALSU-TSHP1-A500	ALSU-TSHP1-A10K	ALSU-TSHP1-A50K	ALSU-TSHP1-A-HV
SHP2, Phospho-Y542	ALSU-PSHP2-A500	ALSU-PSHP2-A10K	ALSU-PSHP2-A50K	ALSU-PSHP2-A-HV
SHP2, Phospho-Y580	ALSU-PSHP2-B500	ALSU-PSHP2-B10K	ALSU-PSHP2-B50K	ALSU-PSHP2-B-HV
SHP2, Total	ALSU-TSHP2-A500	ALSU-TSHP2-A10K	ALSU-TSHP2-A50K	ALSU-TSHP2-A-HV
SIRP α , Phospho-pan Y	ALSU-PSIRP-A500	ALSU-PSIRP-A10K	ALSU-PSIRP-A50K	ALSU-PSIRP-A-HV

Kits launched recently are highlighted in bold and orange.

Alphabetical Listing of Alpha SureFire Ultra Products (continued...)

Product Description	Part Number			
	AlphaLISA SureFire Ultra			
	500 Assay Points	10,000 Assay Points	50,000 Assay Points	100 Assay Points
SIRP α , Total	ALSU-TSIRP-A500	ALSU-TSIRP-A10K	ALSU-TSIRP-A50K	ALSU-TSIRP-A-HV
SKP2, Total	ALSU-TSKP2-A500	ALSU-TSKP2-A10K	ALSU-TSKP2-A50K	ALSU-TSKP2-A-HV
SLP76, Phospho-S376	ALSU-PSLP-A500	ALSU-PSLP-A10K	ALSU-PSLP-A50K	ALSU-PSLP-A-HV
SLP76, Phospho-S376 (Mouse)	ALSU-PSLP-D500	ALSU-PSLP-D10K	ALSU-PSLP-D50K	ALSU-PSLP-D-HV
SLP76, Phospho-Y113	ALSU-PSLP-B500	ALSU-PSLP-B10K	ALSU-PSLP-B50K	ALSU-PSLP-B-HV
SLP76, Phospho-Y145	ALSU-PSLP-C500	ALSU-PSLP-C10K	ALSU-PSLP-C50K	ALSU-PSLP-C-HV
SLP76, Phospho-Y145 (Mouse)	ALSU-PSLP-E500	ALSU-PSLP-E10K	ALSU-PSLP-E50K	ALSU-PSLP-E-HV
SLP76, Total	ALSU-TSLP-A500	ALSU-TSLP-A10K	ALSU-TSLP-A50K	ALSU-TSLP-A-HV
SLP76, Total (Mouse)	ALSU-TSLP-B500	ALSU-TSLP-B10K	ALSU-TSLP-B50K	ALSU-TSLP-B-HV
SMAD1, Phospho-S463/465	ALSU-PSM1-A500	ALSU-PSM1-A10K	ALSU-PSM1-A50K	ALSU-PSM1-A-HV
SMAD1, Total	ALSU-TSM1-A500	ALSU-TSM1-A10K	ALSU-TSM1-A50K	ALSU-TSM1-A-HV
SMAD2, Phospho-S465/467	ALSU-PSM2-A500	ALSU-PSM2-A10K	ALSU-PSM2-A50K	ALSU-PSM2-A-HV
SMAD2, Total	ALSU-TSM2-A500	ALSU-TSM2-A10K	ALSU-TSM2-A50K	ALSU-TSM2-A-HV
SMAD3, Phospho-S423/425	ALSU-PSM3-A500	ALSU-PSM3-A10K	ALSU-PSM3-A50K	ALSU-PSM3-A-HV
SMAD3, Total	ALSU-TSM3-A500	ALSU-TSM3-A10K	ALSU-TSM3-A50K	ALSU-TSM3-A-HV
SMAD4, Total	ALSU-TSM4-A500	ALSU-TSM4-A10K	ALSU-TSM4-A50K	ALSU-TSM4-A-HV
SMARCA2, Total	ALSU-TSMCA2-A500	ALSU-TSMCA2-A10K	ALSU-TSMCA2-A50K	ALSU-TSMCA2-A-HV
SMARCA4, Total	ALSU-TBRG1-A500	ALSU-TBRG1-A10K	ALSU-TBRG1-A50K	ALSU-TBRG1-A-HV
SQSTM1 p62, Phospho-S351	ALSU-PSQSTM-A500	ALSU-PSQSTM-A10K	ALSU-PSQSTM-A50K	ALSU-PSQSTM-A-HV
SQSTM1 p62, Phospho-S403	ALSU-PSQSTM-B500	ALSU-PSQSTM-B10K	ALSU-PSQSTM-B50K	ALSU-PSQSTM-B-HV
SQSTM1 p62, Total	ALSU-TSQSTM-A500	ALSU-TSQSTM-A10K	ALSU-TSQSTM-A50K	ALSU-TSQSTM-A-HV
Src, Phospho-Y419	ALSU-PSRC-A500	ALSU-PSRC-A10K	ALSU-PSRC-A50K	ALSU-PSRC-A-HV
STAT1, Phospho-S727	ALSU-PST1-B500	ALSU-PST1-B10K	ALSU-PST1-B50K	ALSU-PST1-B-HV
STAT1, Phospho-Y701	ALSU-PST1-A500	ALSU-PST1-A10K	ALSU-PST1-A50K	ALSU-PST1-A-HV
STAT1 High Performance, Phospho-Y701	ALSU-PST1-C500	ALSU-PST1-C10K	ALSU-PST1-C50K	ALSU-PST1-C-HV
STAT1, Total	ALSU-TST1-A500	ALSU-TST1-A10K	ALSU-TST1-A50K	ALSU-TST1-A-HV
STAT3, Phospho-Y705	ALSU-PST3-A500	ALSU-PST3-A10K	ALSU-PST3-A50K	ALSU-PST3-A-HV
STAT3, Total	ALSU-TST3-A500	ALSU-TST3-A10K	ALSU-TST3-A50K	ALSU-TST3-A-HV
STAT4, Phospho-Y693	ALSU-PST4-A500	ALSU-PST4-A10K	ALSU-PST4-A50K	ALSU-PST4-A-HV
STAT4, Total	ALSU-TST4-A500	ALSU-TST4-A10K	ALSU-TST4-A50K	ALSU-TST4-A-HV
STAT5, Phospho-Y694/699	ALSU-PST5-B500	ALSU-PST5-B10K	ALSU-PST5-B50K	ALSU-PST5-B-HV
STAT5, Total	ALSU-TST5-A500	ALSU-TST5-A10K	ALSU-TST5-A50K	ALSU-TST5-A-HV
STAT6, Phospho-Y641	ALSU-PST6-A500	ALSU-PST6-A10K	ALSU-PST6-A50K	ALSU-PST6-A-HV
STAT6 High Performance, Phospho-Y641	ALSU-PST6-B500	ALSU-PST6-B10K	ALSU-PST6-B50K	ALSU-PST6-B-HV
STAT6, Phospho-Y641 (Mouse)	ALSU-PST6-C500	ALSU-PST6-C10K	ALSU-PST6-C50K	ALSU-PST6-C-HV
STAT6, Total	ALSU-TST6-A500	ALSU-TST6-A10K	ALSU-TST6-A50K	ALSU-TST6-A-HV
STING, Phospho-S365 (Mouse)	ALSU-PSTNG-B500	ALSU-PSTNG-B10K	ALSU-PSTNG-B50K	ALSU-PSTNG-B-HV
STING, Phospho-S366	ALSU-PSTNG-A500	ALSU-PSTNG-A10K	ALSU-PSTNG-A50K	ALSU-PSTNG-A-HV
STING, Total	ALSU-TSTNG-A500	ALSU-TSTNG-A10K	ALSU-TSTNG-A50K	ALSU-TSTNG-A-HV

Kits launched recently are highlighted in bold and orange.

Alphabetical Listing of AlphaLISA SureFire (continued...)

Product Description	Part Number			
	AlphaLISA SureFire Ultra			
	500 Assay Points	10,000 Assay Points	50,000 Assay Points	100 Assay Points
STING, Total (Mouse)	ALSU-TSTNG-B500	ALSU-TSTNG-B10K	ALSU-TSTNG-B50K	ALSU-TSTNG-B-HV
Syk, Phospho-Y352	ALSU-PSYK-B500	ALSU-PSYK-B10K	ALSU-PSYK-B50K	ALSU-PSYK-B-HV
Syk, Phospho-Y525/526	ALSU-PSYK-A500	ALSU-PSYK-A10K	ALSU-PSYK-A50K	ALSU-PSYK-A-HV
Syk, Total	ALSU-TSYK-A500	ALSU-TSYK-A10K	ALSU-TSYK-A50K	ALSU-TSYK-A-HV
SYK, Total (Mouse)	ALSU-TSYK-B500	ALSU-TSYK-B10K	ALSU-TSYK-B50K	ALSU-TSYK-B-HV
TAK1, Phospho-T184/187	ALSU-PTAK-A500	ALSU-PTAK-A10K	ALSU-PTAK-A50K	ALSU-PTAK-A-HV
TAK1, Total	ALSU-TTAK-A500	ALSU-TTAK-A10K	ALSU-TTAK-A50K	ALSU-TTAK-A-HV
Tau, Aggregate	ALSU-ATAU-A500	ALSU-ATAU-A10K	ALSU-ATAU-A50K	ALSU-ATAU-A-HV
Tau, Phospho-S214	ALSU-PTAU-A500	ALSU-PTAU-A10K	ALSU-PTAU-A50K	ALSU-PTAU-A-HV
Tau, Phospho-S396	ALSU-PTAU-B500	ALSU-PTAU-B10K	ALSU-PTAU-B50K	ALSU-PTAU-B-HV
Tau, Phospho-S404	ALSU-PTAU-C500	ALSU-PTAU-C10K	ALSU-PTAU-C50K	ALSU-PTAU-C-HV
Tau, Phospho-T181	ALSU-PTAU-D500	ALSU-PTAU-D10K	ALSU-PTAU-D50K	ALSU-PTAU-D-HV
Tau, Phospho-T205	ALSU-PTAU-E500	ALSU-PTAU-E10K	ALSU-PTAU-E50K	ALSU-PTAU-E-HV
Tau, Phospho-T217	ALSU-PTAU-G500	ALSU-PTAU-G10K	ALSU-PTAU-G50K	ALSU-PTAU-G-HV
Tau, Total	ALSU-TTAU-A500	ALSU-TTAU-A10K	ALSU-TTAU-A50K	ALSU-TTAU-A-HV
TBK1, Phospho-S172	ALSU-PTBK1-A500	ALSU-PTBK1-A10K	ALSU-PTBK1-A50K	ALSU-PTBK1-A-HV
TBK1, Total	ALSU-TTBK1-A500	ALSU-TTBK1-A10K	ALSU-TTBK1-A50K	ALSU-TTBK1-A-HV
TDP43, Phospho-S409/410	ALSU-PTDP43-A500	ALSU-PTDP43-A10K	ALSU-PTDP43-A50K	ALSU-PTDP43-A-HV
TDP43, Phospho-S409/410 (Mouse)	ALSU-PTDP43-B500	ALSU-PTDP43-B10K	ALSU-PTDP43-B50K	ALSU-PTDP43-B-HV
TDP43 Aggregate	ALSU-ATDP43-A500	ALSU-ATDP43-A10K	ALSU-ATDP43-A50K	ALSU-ATDP43-A-HV
TDP43, Total (Mouse)	ALSU-TTDP43-B500	ALSU-TTDP43-B10K	ALSU-TTDP43-B50K	ALSU-TTDP43-B-HV
TDP43, Total	ALSU-TTDP43-A500	ALSU-TTDP43-A10K	ALSU-TTDP43-A50K	ALSU-TTDP43-A-HV
TFE3, Phospho-S321	ALSU-PTFE3-A500	ALSU-PTFE3-A10K	ALSU-PTFE3-A50K	ALSU-PTFE3-A-HV
TFE3, Total	ALSU-TTFE3-A500	ALSU-TTFE3-A10K	ALSU-TTFE3-A50K	ALSU-TTFE3-A-HV
TFEB, Phospho-S122	ALSU-PTFEB-A500	ALSU-PTFEB-A10K	ALSU-PTFEB-A50K	ALSU-PTFEB-A-HV
TFEB, Phospho-S122 (Mouse)	ALSU-PTFEB-C500	ALSU-PTFEB-C10K	ALSU-PTFEB-C50K	ALSU-PTFEB-C-HV
TFEB, Phospho-S211	ALSU-PTFEB-B500	ALSU-PTFEB-B10K	ALSU-PTFEB-B50K	ALSU-PTFEB-B-HV
TFEB, Phospho-S211 (Mouse)	ALSU-PTFEB-D500	ALSU-PTFEB-D10K	ALSU-PTFEB-D50K	ALSU-PTFEB-D-HV
TFEB, Total	ALSU-TTFEB-A500	ALSU-TTFEB-A10K	ALSU-TTFEB-A50K	ALSU-TTFEB-A-HV
TFEB, Total (Mouse)	ALSU-TTFEB-B500	ALSU-TTFEB-B10K	ALSU-TTFEB-B50K	ALSU-TTFEB-B-HV
TIE2, Phospho-Y992	ALSU-PTIE2-A500	ALSU-PTIE2-A10K	ALSU-PTIE2-A50K	ALSU-PTIE2-A-HV
TIE2, Total	ALSU-TTIE2-A500	ALSU-TTIE2-A10K	ALSU-TTIE2-A50K	ALSU-TTIE2-A-HV
TNFAIP3, Total	ALSU-TTNFA-A500	ALSU-TTNFA-A10K	ALSU-TTNFA-A50K	ALSU-TTNFA-A-HV
TRAF3, Total	ALSU-TTRAF3-A500	ALSU-TTRAF3-A10K	ALSU-TTRAF3-A50K	ALSU-TTRAF3-A-HV
TREM2 Aggregate	ALSU-ATREM2-A500	ALSU-ATREM2-A10K	ALSU-ATREM2-A50K	ALSU-ATREM2-A-HV
TREM2, Total	ALSU-TTREM2-A500	ALSU-TTREM2-A10K	ALSU-TTREM2-A50K	ALSU-TTREM2-A-HV
TREM2/DAP12, Complex	ALSU-TTRMDP-A500	ALSU-TTRMDP-A10K	ALSU-TTRMDP-A50K	ALSU-TTRMDP-A-HV
TrkA/TrkB, Phospho- Y674/675,Y706/707	ALSU-PTRKAB-A500	ALSU-PTRKAB-A10K	ALSU-PTRKAB-A50K	ALSU-PTRKAB-A-HV
TYK2, Phospho-Y1054/1055	ALSU-PTYK2-A500	ALSU-PTYK2-A10K	ALSU-PTYK2-A50K	ALSU-PTYK2-A-HV

Kits launched recently are highlighted in **bold and orange**.

Product Description	Part Number			
	AlphaLISA SureFire Ultra			
	500 Assay Points	10,000 Assay Points	50,000 Assay Points	100 Assay Points
TYK2, Total	ALSU-TTYK2-A500	ALSU-TTYK2-A10K	ALSU-TTYK2-A50K	ALSU-TTYK2-A-HV
TROP2, Total	ALSU-TTROP2-A500	ALSU-TTROP2-A10K	ALSU-TTROP2-A50K	ALSU-TTROP2-A-HV
Ubiquitin, Phospho-S65	ALSU-PUBI-A500	ALSU-PUBI-A10K	ALSU-PUBI-A50K	ALSU-PUBI-A-HV
Ubiquitin, Total	ALSU-TUBI-A500	ALSU-TUBI-A10K	ALSU-TUBI-A50K	ALSU-TUBI-A-HV
ULK1, Phospho-S556	ALSU-PULK1-A500	ALSU-PULK1-A10K	ALSU-PULK1-A50K	ALSU-PULK1-A-HV
ULK1, Phospho-S758	ALSU-PULK1-B500	ALSU-PULK1-B10K	ALSU-PULK1-B50K	ALSU-PULK1-B-HV
ULK1, Total	ALSU-TULK1-A500	ALSU-TULK1-A10K	ALSU-TULK1-A50K	ALSU-TULK1-A-HV
VAV1, Phospho-Y174	ALSU-PVAV1-A500	ALSU-PVAV1-A10K	ALSU-PVAV1-A50K	ALSU-PVAV1-A-HV
VAV1, Total	ALSU-TVAV1-A500	ALSU-TVAV1-A10K	ALSU-TVAV1-A50K	ALSU-TVAV1-A-HV
VEGFR2, Phospho-Y951	ALSU-PVGFR-B500	ALSU-PVGFR-B10K	ALSU-PVGFR-B50K	ALSU-PVGFR-B-HV
VEGFR2, Phospho-Y1175	ALSU-PVGFR-A500	ALSU-PVGFR-A10K	ALSU-PVGFR-A50K	ALSU-PVGFR-A-HV
VEGFR2, Phospho-Y1214	ALSU-PVGFR-C500	ALSU-PVGFR-C10K	ALSU-PVGFR-C50K	ALSU-PVGFR-C-HV
VEGFR2, Total	ALSU-TVGFR-A500	ALSU-TVGFR-A10K	ALSU-TVGFR-A50K	ALSU-TVGFR-A-HV
WDR5, Total	ALSU-TWDR-A500	ALSU-TWDR-A10K	ALSU-TWDR-A50K	ALSU-TWDR-A-HV
Wee1, Total	ALSU-TWEE-A500	ALSU-TWEE-A10K	ALSU-TWEE-A50K	ALSU-TWEE-A-HV
XBP1s, Total	ALSU-TXBP1-A500	ALSU-TXBP1-A10K	ALSU-TXBP1-A50K	ALSU-TXBP1-A-HV
YAP, Phospho-S127	ALSU-PYAP-B500	ALSU-PYAP-B10K	ALSU-PYAP-B50K	ALSU-PYAP-B-HV
YAP, Total	ALSU-TYAP-A500	ALSU-TYAP-A10K	ALSU-TYAP-A50K	ALSU-TYAP-A-HV
ZAP-70, Phospho-Y319	ALSU-PZAP-A500	ALSU-PZAP-A10K	ALSU-PZAP-A50K	ALSU-PZAP-A-HV
ZAP-70, Total	ALSU-TZAP-A500	ALSU-TZAP-A10K	ALSU-TZAP-A50K	ALSU-TZAP-A-HV

Alphabetical Listing of AlphaLISA SureFire Biotin Free

Product Description	Part Number			
	AlphaLISA SureFire Biotin Free			
	500 Assay Points	10,000 Assay Points	50,000 Assay Points	100 Assay Points
AKT1/2/3, Phospho-S473	ASBF-PAKT-A500	ASBF-PAKT-A10K	ASBF-PAKT-A50K	ASBF-PAKT-A-HV
AKT1/2/3, Total	ASBF-TAKT-A500	ASBF-TAKT-A10K	ASBF-TAKT-A50K	ASBF-TAKT-A-HV
CDK1, Phospho-T14	ASBF-PCDK1-A500	ASBF-PCDK1-A10K	ASBF-PCDK1-A50K	ASBF-PCDK1-A-HV
CDK1, Total	ASBF-TCDK1-A500	ASBF-TCDK1-A10K	ASBF-TCDK1-A50K	ASBF-TCDK1-A-HV
ERK1/2, Phospho-T202/Y204	ASBF-PERK-A500	ASBF-PERK-A10K	ASBF-PERK-A50K	ASBF-PERK-A-HV
ERK1/2, Total	ASBF-TERK-A500	ASBF-TERK-A10K	ASBF-TERK-A50K	ASBF-TERK-A-HV
IRF5, Aggregated	ASBF-AIRF5-A500	ASBF-AIRF5-A10K	ASBF-AIRF5-A50K	ASBF-AIRF5-A-HV
IRF5, Phospho-S446	ASBF-PIRF5-A500	ASBF-PIRF5-A10K	ASBF-PIRF5-A50K	ASBF-PIRF5-A-HV
IRF5, Total	ASBF-TIRF5-A500	ASBF-TIRF5-A10K	ASBF-TIRF5-A50K	ASBF-TIRF5-A-HV
NF- κ B p65, Phospho-S536	ASBF-PNFKB-A500	ASBF-PNFKB-A10K	ASBF-PNFKB-A50K	ASBF-PNFKB-A-HV
NF- κ B p65, Total	ASBF-TNFKB-A500	ASBF-TNFKB-A10K	ASBF-TNFKB-A50K	ASBF-TNFKB-A-HV

Kits launched recently are highlighted in **bold and orange**.

Alpha SureFire Ultra Multiplex (continued...)

Product Description	Part Number			
	AlphaLISA SureFire Biotin Free			
	500 Assay Points	10,000 Assay Points	50,000 Assay Points	100 Assay Points
Rb, Phospho-S780	ASBF-PRB-A500	ASBF-PRB-A10K	ASBF-PRB-A50K	ASBF-PRB-A-HV
Rb, Phospho-S807/811	ASBF-PRB-B500	ASBF-PRB-B10K	ASBF-PRB-B50K	ASBF-PRB-B-HV
Rb, Phospho-T821	ASBF-PRB-C500	ASBF-PRB-C10K	ASBF-PRB-C50K	ASBF-PRB-C-HV
Rb, Phospho-T826	ASBF-PRB-D500	ASBF-PRB-D10K	ASBF-PRB-D50K	ASBF-PRB-D-HV
Rb, Total	ASBF-TRB-A500	ASBF-TRB-A10K	ASBF-TRB-A50K	ASBF-TRB-A-HV
STAT1, Phospho-Y701	ASBF-PST1-A500	ASBF-PST1-A10K	ASBF-PST1-A50K	ASBF-PST1-A-HV
STAT1, Total	ASBF-TST1-A500	ASBF-TST1-A10K	ASBF-TST1-A50K	ASBF-TST1-A-HV
STAT3, Phospho-Y705	ASBF-PST3-A500	ASBF-PST3-A10K	ASBF-PST3-A50K	ASBF-PST3-A-HV
STAT3, Total	ASBF-TST3-A500	ASBF-TST3-A10K	ASBF-TST3-A50K	ASBF-TST3-A-HV
STAT5, Phospho-Y694/699	ASBF-PST5-A500	ASBF-PST5-A10K	ASBF-PST5-A50K	ASBF-PST5-A-HV
STAT5, Total	ASBF-TST5-A500	ASBF-TST5-A10K	ASBF-TST5-A50K	ASBF-TST5-A-HV
STAT6, Phospho-Y641 High Performance	ASBF-PST6-B500	ASBF-PST6-B10K	ASBF-PST6-B50K	ASBF-PST6-B-HV
STAT6, Phospho-Y641	ASBF-PST6-A500	ASBF-PST6-A10K	ASBF-PST6-A50K	ASBF-PST6-A-HV
STAT6, Total	ASBF-TST6-A500	ASBF-TST6-A10K	ASBF-TST6-A50K	ASBF-TST6-A-HV
SYK, Phospho-Y525/526	ASBF-PSYK-A500	ASBF-PSYK-A10K	ASBF-PSYK-A50K	ASBF-PSYK-A-HV
SYK, Total	ASBF-TSYK-A500	ASBF-TSYK-A10K	ASBF-TSYK-A50K	ASBF-TSYK-A-HV

Alpha SureFire Ultra Multiplex

Product Description		Part Number			
		500 Assay Points	10,000 Assay Points	50,000 Assay Points	100 Assay Points
AKT 1/2/3, Phospho-T308 + AKT 1, Total	Dual Target	MPSU-PTAKT-O500	MPSU-PTAKT-O10K	MPSU-PTAKT-O50K	MPSU-PTAKT-O-HV
AKT 1/2/3, Phospho-T450 + AKT 1, Total	Dual Target	MPSU-PTAKT-N500	MPSU-PTAKT-N10K	MPSU-PTAKT-N50K	MPSU-PTAKT-N-HV
Akt 1/2/3, Phospho-S473 + Akt1, Total	Dual Target	MPSU-PTAKT-M500	MPSU-PTAKT-M10K	MPSU-PTAKT-M50K	MPSU-PTAKT-M-HV
ALK, Phospho-Y1604 + ALK, Total	Dual Target	MPSU-PTALK-K500	MPSU-PTALK-K10K	MPSU-PTALK-K50K	MPSU-PTALK-K-HV
AMPK α 1/2, Phospho-T172 + AMP α	Dual Target	MPSU-PTAMPK-K500	MPSU-PTAMPK-K10K	MPSU-PTAMPK-K50K	MPSU-PTAMPK-K-HV
BTK, Phospho-Y223 + BTK, Total	Dual Target	MPSU-PTBTK-K500	MPSU-PTBTK-K10K	MPSU-PTBTK-K50K	MPSU-PTBTK-K-HV
CDK1, Phospho-T14 + CDK1, Total	Dual Target	MPSU-PTCDK1-K500	MPSU-PTCDK1-K10K	MPSU-PTCDK1-K50K	MPSU-PTCDK1-K-HV
CDK1, Phospho-Y15 + CDK1, Total	Dual Target	MPSU-PTCDK1-M500	MPSU-PTCDK1-M10K	MPSU-PTCDK1-M50K	MPSU-PTCDK1-M-HV
Cofilin, Phospho-S3 + Cofilin, Total	Dual Target	MPSU-PTCOF-K500	MPSU-PTCOF-K10K	MPSU-PTCOF-K50K	MPSU-PTCOF-K-HV
DAP12, Phospho-Y91 + DAP12, Total		MPSU-PTDAP12-K500	MPSU-PTDAP12-K10K	MPSU-PTDAP12-K50K	MPSU-PTDAP12-K-HV
EGFR, Phospho-Y1068 + EGFR, Total	Dual Target	MPSU-PTEGFR-K500	MPSU-PTEGFR-K10K	MPSU-PTEGFR-K50K	MPSU-PTEGFR-K-HV
eIF2 α , Phospho-S51 + eIF2 α , Total	Dual Target	MPSU-PTEIF2-K500	MPSU-PTEIF2-K10K	MPSU-PTEIF2-K50K	MPSU-PTEIF2-K-HV
ErbB2, Phospho-Y1221/1222 + ErbB2, Total	Dual Target	MPSU-PTEB2-K50K	MPSU-PTEB2-K10K	MPSU-PTEB2-K50K	MPSU-PTEB2-K-HV

Not released recently are highlighted in bold and orange.

Product Description		Part Number	Part Number	Part Number	Part Number
		500 Assay Points	10,000 Assay Points	50,000 Assay Points	100 Assay Points
ErbB3, Phospho-Y1289 + ErbB3, Total	Dual Target	MPSU-PTERB3-K500	MPSU-PTERB3-K10K	MPSU-PTERB3-K50K	MPSU-PTERB3-K-HV
ERK1/2 p-T202/Y204 + ERK Total	Dual Target	MPSU-PTERK-M500	MPSU-PTERK-M10K	MPSU-PTERK-M50K	MPSU-PTERK-M-HV
Histone H2A.X, Phospho p-S139 + Histone H2A.X, Total	Dual Target	MPSU-PTH2X-K500	MPSU-PTH2X-K10K	MPSU-PTH2X-K50K	MPSU-PTH2X-K-HV
IGF-1 Receptor β , Phospho-Y1135/1136 + IGF-1 Receptor β , Total	Dual Target	MPSU-PTIGFR-K500	MPSU-PTIGFR-K10K	MPSU-PTIGFR-K50K	MPSU-PTIGFR-K-HV
Insulin Receptor β , Phospho-Y1150/1151 + Insuline Receptor β , Total	Dual Target	MPSU-PTINR-K500	MPSU-PTINR-K10K	MPSU-PTINR-K50K	MPSU-PTINR-K-HV
MEK1, Phospho-S218/222 + MEK1, Total	Dual Target	MPSU-PTMEK1-K500	MPSU-PTMEK1-K10K	MPSU-PTMEK1-K50K	MPSU-PTMEK1-K-HV
NF κ B p65, Phospho-S536 + NF κ B p65, Total	Dual Target	MPSU-PTNFKB-K500	MPSU-PTNFKB-K10K	MPSU-PTNFKB-K50K	MPSU-PTNFKB-K-HV
p53, Acetyl-K385 + p53, Total	Dual Target	MPSU-ATP53-K500	MPSU-ATP53-K10K	MPSU-ATP53-K50K	MPSU-ATP53-K-HV
p53, Phospho-S15 + p53, Total	Dual Target	MPSU-PTP53-K500	MPSU-PTP53-K10K	MPSU-PTP53-K50K	MPSU-PTP53-K-HV
p70S6K, Phospho-T389 + p70S6K, Total	Dual Target	MPSU-PTP70-K500	MPSU-PTP70-K10K	MPSU-PTP70-K50K	MPSU-PTP70-K-HV
PDGF Receptor β , Phospho-Y751 + PDGF Receptor β , Total	Dual Target	MPSU-PTPDGF-K500	MPSU-PTPDGF-K10K	MPSU-PTPDGF-K50K	MPSU-PTPDGF-K-HV
Rb, Phospho-S780 + Rb, Total	Dual Target	MPSU-PTRB-K500	MPSU-PTRB-K10K	MPSU-PTRB-K50K	MPSU-PTRB-K5-HV
Rb, Phospho-S807/811 + Rb, Total	Dual Target	MPSU-PTRB-M500	MPSU-PTRB-M10K	MPSU-PTRB-M50K	MPSU-PTRB-M-HV
Ret, Phospho-panY + Ret, Total	Dual Target	MPSU-PTRET-K500	MPSU-PTRET-K10K	MPSU-PTRET-K50K	MPSU-PTRET-K-HV
Ribosomal Protein S6-S235/236 + Ribosomal Protein S6, Total	Dual Target	MPSU-PTRPS6-B500	MPSU-PTRPS6-B10K	MPSU-PTRPS6-B50K	MPSU-PTRPS6-B-HV
Ribosomal Protein S6-S240/244 + Ribosomal Protein S6, Total	Dual Target	MPSU-PTRPS6-A500	MPSU-PTRPS6-A10K	MPSU-PTRPS6-A50K	MPSU-PTRPS6-A-HV
SLP-76, Phospho-S376 + SLP-76, Total	Dual Target	MPSU-PTSLP-K500	MPSU-PTSLP-K10K	MPSU-PTSLP-K50K	MPSU-PTSLP-K-HV
SMAD1, Phospho-S463/465 + SMAD1, Total	Dual Target	MPSU-PTSM1-K500	MPSU-PTSM1-K10K	MPSU-PTSM1-K50K	MPSU-PTSM1-K-HV
SMAD2, Phospho-S465/467 + SMAD2, Total	Dual Target	MPSU-PTSM2-K-500	MPSU-PTSM2-K10K	MPSU-PTSM2-K50K	MPSU-PTSM2-K-HV
STAT1, Phospho-Y701 + STAT1, Total	Dual Target	MPSU-PTST1-K500	MPSU-PTST1-K10K	MPSU-PTST1-K50K	MPSU-PTST1-K-HV
STAT3, Phospho-Y705 + STAT3, Total	Dual Target	MPSU-PTST3-K500	MPSU-PTST3-K10K	MPSU-PTST3-K50K	MPSU-PTST3-K-HV
STAT5, Phospho-Y694/695 + STAT5, Total	Dual Target	MPSU-PTST5-K500	MPSU-PTST5-K10K	MPSU-PTST5-K50K	MPSU-PTST5-K-HV
STAT6, Phospho-Y641 + STAT6, Total	Dual Target	MPSU-PTST6-K500	MPSU-PTST6-K10K	MPSU-PTST6-K50K	MPSU-PTST6-K-HV
SYK, Phospho-Y525/526 + SYK, Total	Dual Target	MPSU-PTSYK-K500	MPSU-PTSYK-K10K	MPSU-PTSYK-K50K	MPSU-PTSYK-K-HV

Terbium SureFire Ultra

Kits launched recently are highlighted in **bold and orange**.

The terbium *SureFire Ultra* (TBSU) kits measure a single phosphoprotein target and are intended to be combined with a standard AlphaLISA *SureFire Ultra* kit (ALSU) to assess the second target. The TBSU kits allow for a pick-and-pack combination of any two phosphoprotein targets in the assay lists, providing measurement of two separate targets with ultimate flexibility of selection. The TBSU kits will report the target of interest through the Terbium (Tb) Acceptor beads, while the ALSU kit reports via the Europium (Eu) AlphaLISA Acceptor beads

Product Description	Part Number		Part Number	
	500 Assay Points	10,000 Assay Points	50,000 Assay Points	100 Assay Points
4EBP1, Phospho-T37/46	TBSU-P4EBP-A500	TBSU-P4EBP-A10K	TBSU-P4EBP-A50K	TBSU-P4EBP-A-HV
Akt1/2/3, Phospho-S473	TBSU-PAKT-B500	TBSU-PAKT-B10K	TBSU-PAKT-B50K	TBSU-PAKT-B-HV
Cofilin, Total	TBSU-TCOF-A500	TBSU-TCOF-A10K	TBSU-TCOF-A50K	TBSU-TCOF-A-HV
CREB-1, Phospho-S133	TBSU-PCREB-A500	TBSU-PCREB-A10K	TBSU-PCREB-A50K	TBSU-PCREB-A-HV
EGF Receptor, Phospho-Y1068	TBSU-PEGFR-A500	TBSU-PEGFR-A10K	TBSU-PEGFR-A50K	TBSU-PEGFR-A-HV
eIF2 α , Phospho-S51	TBSU-PEIF2-B500	TBSU-PEIF2-B10K	TBSU-PEIF2-B50K	TBSU-PEIF2-B-HV
eIF4E, Phospho-S209	TBSU-PEIF4-A500	TBSU-PEIF4-A10K	TBSU-PEIF4-A50K	TBSU-PEIF4-A-HV
ERK1/2, Phospho-T202/Y204	TBSU-PERK-A500	TBSU-PERK-A10K	TBSU-PERK-A50K	TBSU-PERK-A-HV
GSK3 β , Phospho-S6	TBSU-PGS3B-A500	TBSU-PGS3B-A10K	TBSU-PGS3B-A50K	TBSU-PGS3B-A-HV
IGF1 Receptor β , Phospho-Y1135/1136	TBSU-PIGFR-B500	TBSU-PIGFR-B10K	TBSU-PIGFR-B50K	TBSU-PIGFR-B-HV
Insulin Receptor β , Phospho-1150/1151	TBSU-PINR-A500	TBSU-PINR-A10K	TBSU-PINR-A50K	TBSU-PINR-A-HV
JNK1/2/3, Phospho-T183/Y185	TBSU-PJNK-A500	TBSU-PJNK-A10K	TBSU-PJNK-A50K	TBSU-PJNK-A-HV
MEK1, Phospho-S218/222	TBSU-PMEK1-A500	TBSU-PMEK1-A10K	TBSU-PMEK1-A50K	TBSU-PMEK1-A-HV
mTOR, Phospho-S2448	TBSU-PMTOR-A500	TBSU-PMTOR-A10K	TBSU-PMTOR-A50K	TBSU-PMTOR-A-HV
NF κ B p65, Phospho-S536	TBSU-PNFKB-A500	TBSU-PNFKB-A10K	TBSU-PNFKB-A50K	TBSU-PNFKB-A-HV
p38 MAPK, Phospho-T180/Y182	TBSU-PP38-B500	TBSU-PP38-B10K	TBSU-PP38-B50K	TBSU-PP38-B-HV
p70S6K, Phospho-T389	TBSU-PP70-A500	TBSU-PP70-A10K	TBSU-PP70-A50K	TBSU-PP70-A-HV
RPS6, Phospho-S240/244	TBSU-PS6R-A500	TBSU-PS6R-A10K	TBSU-PS6R-A50K	TBSU-PS6R-A-HV
SLP76, Phospho-S376	TBSU-PSLP-A500	TBSU-PSLP-A10K	TBSU-PSLP-A50K	TBSU-PSLP-A-HV
SMAD1, Phospho-S463/465	TBSU-PSM1-A500	TBSU-PSM1-A10K	TBSU-PSM1-A50K	TBSU-PSM1-A-HV
SMAD3, Phospho-S423/425	TBSU-PSM3-A500	TBSU-PSM3-A10K	TBSU-PSM3-A50K	TBSU-PSM3-A-HV
STAT1, Phospho-Y701	TBSU-PST1-A500	TBSU-PST1-A10K	TBSU-PST1-A50K	TBSU-PST1-A-HV
STAT1, Phospho-S727	TBSU-PST1-B500	TBSU-PST1-B10K	TBSU-PST1-B50K	TBSU-PST1-B-HV
STAT3, Phospho-Y705	TBSU-PST3-A500	TBSU-PST3-A10K	TBSU-PST3-A50K	TBSU-PST3-A-HV
STAT4, Phospho-Y693	TBSU-PST4-A500	TBSU-PST4-A10K	TBSU-PST4-A50K	TBSU-PST4-A-HV
STAT5, Phospho-Y694/699	TBSU-PST5-B500	TBSU-PST5-B10K	TBSU-PST5-B50K	TBSU-PST5-B-HV
STAT6, Phospho-Y641	TBSU-PST6-A500	TBSU-PST6-A10K	TBSU-PST6-A50K	TBSU-PST6-A-HV
SYK, Phospho-Y525/526	TBSU-PSYK-A500	TBSU-PSYK-A10K	TBSU-PSYK-A50K	TBSU-PSYK-A-HV
VEGF Receptor 2, Phospho-Y1175	TBSU-PVGFR-A500	TBSU-PVGFR-A10K	TBSU-PVGFR-A50K	TBSU-PVGFR-A-HV

AlphaLISA *SureFire Ultra* Supplementary Buffers

Enough buffer is provided in the kits if following the standard protocol, but you may want to order more if using a different protocol.

Product Description	Part Number	
	10 mL	100 mL
<i>SureFire Ultra</i> Lysis Buffer (5X)	ALSU-LB-10mL	ALSU-LB-100mL
AlphaLISA <i>SureFire Ultra</i> Lysis Buffer B (5X)	ALSU-LBB-10ML	ALSU-LBB-100ML

Kits launched recently are highlighted in **bold and orange**.

Product Description	Part Number	
	10 mL	100 mL
AlphaLISA <i>SureFire Ultra</i> Lysis Buffer C (5X)	ALSU-LBC-10ML	ALSU-LBC-100ML
<i>SureFire Ultra</i> Activation Buffer (50X)	ALSU-AB-10mL	ALSU-AB-100mL
<i>SureFire Ultra</i> Activation Buffer B (50X)	ALSU-ABB-10mL	ALSU-ABB-100mL
<i>SureFire Ultra</i> Activation Buffer C (50X)	ALSU-ABC-10mL	ALSU-ABC-100mL
<i>SureFire Ultra</i> Dilution Buffer (1X)	ALSU-DB-10mL	ALSU-DB-100mL

AlphaLISA *SureFire Ultra* Supplementary Beads

Enough beads are provided in the kits if following the standard protocol, but you may want to order more if using a different protocol.

Product Description	Part Number		
	500 Assay Points (60 µL)	10,000 Assay Points (1.2 mL)	50,000 Assay Points (6 mL)
Alpha Streptavidin Donor Beads (2 mg/mL)	ALSU-ASDB-0.06mL	ALSU-ASDB-1.2mL	ALSU-ASDB-6mL
AlphaLISA <i>SureFire Ultra CaptSure</i> Acceptor Beads	ALSU-ACAB-0.06mL	ALSU-ACAB-1.2mL	ALSU-ACAB-6mL

AlphaLISA *SureFire Ultra* Kits Supplementary Control lysates

Enough control lysates are provided in the kits if following the standard protocol, but if you need more for specific applications, they are available separately. For example, the phospho-ERK control lysate Part# is ALSU-PERK-A-L. Please consult our WEB site to find the references for other kits control lysates.

AlphaLISA *SureFire Ultra* Multiplex Supplementary Beads

Enough beads are provided in the kits if following the standard protocol, but you may want to order more if using a different protocol. These beads can also be substituted to the AlphaLISA (Eu) beads in order to read the target in another wavelength channel.

Product Description	Part Number		
	500 Assay Points (60 µL)	10,000 Assay Points (1.2 mL)	50,000 Assay Points (6 mL)
Alpha 545 (Tb) <i>SureFire Ultra CaptSure</i> Acceptor Beads	MPSU-ACAT-0.06mL	MPSU-ACAT-1.2mL	MPSU-ACAT-6mL
Alpha 545 (Tb) <i>SureFire Ultra CaptSure2</i> Acceptor Beads	MPSU-CS2B-0.06mL	MPSU-CS2B-1.2mL	MPSU-CS2B-6mL

Alpha *SureFire* Biotin-Free supplementary beads

Product Description	Part Number	Part Number	Part Number
	60 µL	1.2 mL	6 mL
Alpha SureFire CaptSure3 Donor Beads	ASBF-CS3DB-0.06ML	ASBF-CS3DB-1.2mL	ASBF-CS3DB-6mL

Beads for Biochemical Kinase Assays

Product Description	Part Number	Part Number	Part Number
	500 Assay Points	10,000 Assay Points	50,000 Assay Points
PY20 Assay Kit	6760601C	6760601M	6760601R
PT66 Assay Kit	6760602C	6760602M	6760602R

Alpha for Target Engagement

Target Engagement Cell Lysis Buffers

Alpha Target Engagement Cell Lysis Buffers can be used in combination with Alpha technology to measure target engagement in cell-based assays.

Product Description	Part Number	Part Number
	100 mL	5 x 10 mL
Target Engagement Cell Lysis Buffer 1 (5X)	TE-BUF1-100ML	
Target Engagement Cell Lysis Buffer 2 (5X)	TE-BUF2-100ML	
Target Engagement Cell Lysis Buffer 3 (5X)	TE-BUF3-100ML	
Target Engagement Cell Lysis Buffer 4 (5X)	TE-BUF4-100ML	
Target Engagement Cell Lysis Buffer 5 (5X)	TE-BUF5-100ML	
Target Engagement Cell Lysis Buffer Selection Kit		TE-BUF-KIT

Alpha Technology Products

ToolBox beads, buffers, and control beads are available for you to setup your own assay and controls. Our local Field Application Specialists team is available to support you in establishing your own assays, or you can ask our OnPoint Custom Assays Development Team to develop the assay you need to your specifications. Alternatively, our custom labeling team is available to label your antibodies, proteins, peptides or small molecules in the technology of your choice. Please contact your Revvity account manager or Revvity sales office for more information.

Product Description	Acceptor Beads				
	Donor Beads ¹⁰ ₂	AlphaLISA 615	AlphaPlex (Tb) 545	AlphaPlex (Sm) 645	AlphaScreen 520-620*
Unconjugated	6762011/2/3	6772001/2/3	6782001/2/3	6792001/2/3	6762001/2/3
<i>Fusion Tag Detection</i>					
Streptavidin	6760002	AL125	AP125TB	AP125SM	
Strep Tactin®	AS106	AL136			
Anti-DIG	AS118	AL113			6760604
Anti-FITC	AS115	AL127			6760605
Anti-DNP	AS111	AL173			
Anti-HRP	AS109	AL171			
Nickel Chelate	AS101	AL108			6760619
Anti-6x His	AS116	AL178	AP178TB	AP178SM	
Glutathione (GSH)	6765300/1/2/3	AL109	AP109TB		

Kits launched recently are highlighted in bold and orange.

AlphaLISA Acceptor Beads (continued...)

Product Description	Acceptor Beads				
	Donor Beads 10 ₂	AlphaLISA 615	AlphaPlex (Tb) 545	AlphaPlex (Sm) 645	AlphaScreen 520-620*
Unconjugated	6762011/2/3	6772001/2/3	6782001/2/3	6792001/2/3	6762001/2/3
Anti-GST		AL110			6760603
Anti-c-myc		AL111			6760611
Anti-Protein C tag		AL172			
Anti-FLAG®	AS103	AL112	AP112TB	AP112SM	6760613
Anti-GFP	AS112	AL133			
Anti-HA		AL170	AP170TB		6760612
LCA (Lens Culinaris Agglutinin)		AL140			
Anti-Maltose-Binding Protein (MBP)		AL134			
Anti-V5		AL129			
<i>Antibody Capture</i>					
Protein A	AS102	AL101	AP101TB	AP101SM	6760137
Protein G		AL102			
Protein L		AL126			
Anti-bovine IgA		AL169			
Anti-chicken IgY		AL131			
Anti-goat IgG		AL107			
Anti-human IgE		AL176			
Anti-human IgG (Fc-specific)	AS114	AL103	AP103TB	AP103SM	

*Please note the AlphaScreen fusion tag products are sold as kits containing fusion tag Acceptors and Streptavidin-coated Donor Beads.

Alpha Donor Beads

Product Description	Part Number	Part Number	Part Number	Part Number
	1 mg	5 mg	25 mg	50 mg
<i>Unconjugated</i>				
Unconjugated Donor Beads	6762013	6762011		6762012
<i>Tag capture</i>				
Streptavidin Donor Beads	6760002S	6760002		6760002B
Strep-Tactin® Donor Beads	AS106D	AS106M	AS106R	
Anti-DIG Donor Beads	AS118D	AS118M	AS118R	
Anti-DNP (dinitrophenol) Donor Beads	AS111D	AS111M	AS111R	
Anti-FITC Donor Beads	AS115D	AS115M	AS115R	
Anti-FLAG Donor Beads	AS103D	AS103M	AS103R	
Anti-GFP Donor Beads	AS112D	AS112M	AS112R	
Anti-GST Donor Beads	AS119D	AS119M	AS119R	
Anti-HRP Donor Beads	AS109D	AS109M	AS109R	
GSH (glutathione) Donor Beads	6765300	6765301	6765301	
Nickel Chelate Donor Beads	AS101D	AS101M	AS101R	
<i>Antibody Capture</i>				
Anti-human IgG Donor beads (Fc-specific)	AS114D	AS114M	AS114R	

Kits launched recently are highlighted in **bold and orange**.

AlphaPlex Acceptor Beads (continued...)

Product Description	Part Number	Part Number	Part Number	Part Number
	1 mg	5 mg	25 mg	50 mg
Anti-6X His Donor Beads	AS116D	AS116M	AS116R	
Anti-Mouse IgG Donor Beads	AS104D	AS104M	AS104R	
Anti-Rabbit IgG Donor Beads	AS105D	AS105M	AS105R	
Anti-Rat IgG Donor Beads	AS110D	AS110M	AS110R	
Anti-VHH Donor Beads	AS117D	AS117M	AS117R	
Human IgG Fc-fragment	AS113D	AS113M	AS113R	
Protein A Donor Beads	AS102D	AS102M	AS102R	

AlphaScreen Acceptor Beads

Product Description	Part Number	Part Number	Part Number	Part Number
	1 mg	5 mg	25 mg	50 mg
<i>Unconjugated</i>	6762003	6762001		6762002
Protein A		6760137M	6760137R	

AlphaLISA Acceptor Beads

Product Description	Part Number	Part Number	Part Number	Part Number	Part Number
	250 µg	1 mg	5 mg	25 mg	50 mg
<i>Unconjugated</i>					
Unconjugated Acceptor Beads		6772001	6772002		6772003
<i>Tag capture</i>					
Streptavidin Acceptor Beads	AL125C		AL125M	AL125R	
Strep-Tactin® Acceptor Beads	AL136C		AL136M	AL136R	
Anti-6X His Acceptor Beads	AL178C		AL178M	AL178R	
Anti-c-myc Acceptor Beads	AL111C		AL111M	AL111R	
Anti-DIG Acceptor Beads	AL113C		AL113M	AL113R	
Anti-DNP (dinitrophenol) Acceptor Beads	AL173C		AL173M	AL173R	
Anti-FITC Acceptor Beads	AL127C		AL127M	AL127R	
Anti-FLAG Acceptor Beads	AL112C		AL112M	AL112R	
Anti-GFP Acceptor Beads	AL133C		AL133M	AL133R	
Anti-GST Acceptor Beads	AL110C		AL110M	AL110R	
Anti-HA Acceptor Beads	AL170C		AL170M	AL170R	
Anti-HRP Acceptor Beads	AL171C		AL171M	AL171R	
Anti-M13 Acceptor Beads	AL182C		AL182M	AL182R	
Anti-Maltose-Binding Protein (MBP) Acceptor Beads	AL134C		AL134M	AL134R	
Anti-Protein C Tag Acceptor Beads	AL172C		AL172M	AL172R	
Anti-V5 Acceptor Beads	AL129C		AL129M	AL129R	
GSH (glutathione) Acceptor Beads	AL109C		AL109M	AL109R	

Kits launched recently are highlighted in bold and orange.

Product Description	Part Number	Part Number	Part Number	Part Number	Part Number
	250 µg	1 mg	5 mg	25 mg	50 mg
Nickel Chelate Acceptor Beads	AL108C		AL108M	AL108R	
<i>Antibody Capture</i>					
Anti-Bovine IgA Acceptor Beads	AL169C		AL169M	AL169R	
Anti-Bovine IgG Acceptor Beads	AL165C		AL165M	AL165R	
Anti-Bovine IgG1 Acceptor Beads	AL166C		AL166M	AL166R	
Anti-Bovine IgG2 Acceptor Beads	AL167C		AL167M	AL167R	
Anti-Bovine IgM Acceptor Beads	AL168C		AL168M	AL168R	
Anti-Goat (Fc-specific) Acceptor Beads	AL107C		AL107M	AL107R	
Anti-Human (Fc-specific) Acceptor Beads	AL103C		AL103M	AL103R	
Anti-Human IgE	AL176C		AL176M	AL176R	
Anti-Human (Fab specific) IgG Acceptor Beads	AL177C		AL177M	AL177R	
Anti-Human IgG1 Acceptor Beads (mouse)	AL179C		AL179M	AL179R	
Anti-Human IgG1 Acceptor Beads (rat)	AL141C		AL141M	AL141R	
Anti-Human IgG2 Acceptor Beads	AL154C		AL154M	AL154R	
Anti-Human IgG4 Acceptor Beads	AL142C		AL142M	AL142R	
Anti-Mouse IgE Acceptor Beads	AL161C		AL161M	AL161R	
Anti-Mouse (Fc-specific) IgG Acceptor Beads	AL105C		AL105M	AL105R	
Anti-Mouse IgG Acceptor Beads	AL164C		AL164M	AL164R	
Anti-Mouse IgG1 Acceptor Beads	AL157C		AL157M	AL157R	
Anti-Mouse IgG2a Acceptor Beads	AL158C		AL158M	AL158R	
Anti-Mouse IgG2b Acceptor Beads	AL181C		AL181M	AL181R	
Anti-Mouse IgG3 Acceptor Beads	AL160C		AL160M	AL160R	
Anti-Mouse IgM Acceptor Beads	AL130C		AL130M	AL130R	
Anti-Mouse IgM Acceptor Beads	AL162C		AL162M	AL162R	
Anti-Rabbit IgG Acceptor Beads	AL104C		AL104M	AL104R	
Anti-Rat IgG Acceptor Beads	AL106C		AL106M	AL106R	
Anti-Sheep IgG Acceptor Beads	AL132C		AL132M	AL132R	
Anti-VHH Acceptor Beads	AL180C		AL180M	AL180R	
Human IgG Fc-fragment Acceptor Beads	AL174C		AL174M	AL174R	
Human IgG (whole)	AL175C		AL175M	AL175R	
Protein A Acceptor Beads	AL101C		AL101M	AL101R	
Protein G Acceptor Beads	AL102C		AL102M	AL102R	
Protein L Acceptor Beads	AL126C		AL126M	AL126R	

AlphaPlex Acceptor Beads

Product Description	Part Number	Part Number	Part Number	Part Number	Part Number
	250 µg	1 mg	5 mg	25 mg	50 mg
<i>Unconjugated</i>					
Unconjugated AlphaPlex 545 (Tb) Acceptor Beads		6782001	6782002		6782003
Unconjugated AlphaPlex 645 (Sm) Acceptor Beads		6792001	6792002		6792003
<i>Tag capture</i>					

Kits launched recently are highlighted in **bold and orange**.

Product Description	Part Number	Part Number	Part Number	Part Number	Part Number
	250 µg	1 mg	5 mg	25 mg	50 mg
Streptavidin AlphaPlex 545 (Tb) Acceptor Beads	AP125TB-C		AP125TB-M	AP125TB-R	
Streptavidin AlphaPlex 645 (Sm) Acceptor Beads	AP125SM-C		AP125SM-M	AP125SM-R	
Anti-6X His AlphaPlex 545 (Tb) Acceptor Beads	AP178TB-C		AP178TB-M	AP178TB-R	
Anti-6X His AlphaPlex 645 (Sm) Acceptor Beads	AP178SM-C		AP178SM-M	AP178SM-R	
Anti-FLAG AlphaPlex 545 (Tb) Acceptor Beads	AP112TB-C		AP112TB-M	AP112TB-R	
Anti-FLAG AlphaPlex 645 (Sm) Acceptor Beads	AP112SM-C		AP112SM-M	AP112SM-R	
Anti-HA AlphaPlex 545 (Tb) Acceptor Beads	AP170TB-C		AP170TB-M	AP170TB-R	
GSH (glutathione) AlphaPlex 545 (Tb) Acceptor Beads	AP109TB-C		AP109TB-M	AP109TB-R	
<i>Antibody capture</i>					
Anti-Human IgG AlphaPlex 545 (Tb) Acceptor Beads	AP103TB-C		AP103TB-M	AP103TB-R	
Anti-Human IgG AlphaPlex 645 (Sm) Acceptor Beads	AP103SM-C		AP103SM-M	AP103SM-R	
Anti-Mouse IgG AlphaPlex 545 (Tb) Acceptor Beads	AP105TB-C		AP105TB-M	AP105TB-R	
Anti-Mouse IgG AlphaPlex 645 (Sm) Acceptor Beads	AP105SM-C		AP105SM-M	AP105SM-R	
Anti-Rabbit IgG AlphaPlex 545 (Tb) Acceptor Beads	AP104TB-C		AP104TB-M	AP104TB-R	
Protein A AlphaPlex 545 (Tb) Acceptor Beads	AP101TB-C		AP101TB-M	AP101TB-R	
Protein A AlphaPlex 645 (Sm) Acceptor Beads	AP101SM-C		AP101SM-M	AP101SM-R	

AlphaScreen Kits and Kit Components

Product Description	Part Number	Part Number	Part Number
	500 Assay Points	10,000 Assay Points	50,000 Assay Points
<i>Unconjugated</i>			
AlphaScreen Conjugation Kit	6760000K		
<i>Tag capture</i>			
Anti-c-myc Assay Kit	6760611C	6760611M	6760611R
Anti-DIG Assay Kit	6760604C	6760604M	6760604R
Anti-FITC Assay Kit	6760605C	6760605M	6760605R
Anti-FLAG Assay Kit	6760613C	6760613M	6760613R
Anti-GST Assay Kit	6760603C	6760603M	6760603R
Anti-HA Assay Kit	6760612C	6760612M	6760612R
Nickel Chelate Assay Kit	6760619C	6760619M	6760619R
Biotinylated HIS Tag		6760303M	

Kits launched recently are highlighted in **bold and orange**.

Product Description	Part Number		
	500 Assay Points	10,000 Assay Points	50,000 Assay Points
Biotinylated GST		6760305M	
<i>Antibody capture</i>			
Anti-mouse IgG Assay Kit	6760606C	6760606M	6760606R
Anti-rabbit IgG Assay Kit	6760607C	6760607M	6760607R
Protein A Assay Kit	6760617C	6760617M	6760617R

Alpha Buffers

Product Description	Part Number	
	10 mL	100 mL
Assay Buffer 1	AL022C	AL022F
Binding Assay Buffer	AL018C	AL018F
Bovine Immunoassay Buffer	AL010C	AL010F
BSA Assay Buffer, 5X	AL021C	AL021F
Casein Buffer, 5X	AL014C	AL014F
Dissociation Buffer, 3X	AL006C	AL006F
Epigenetics Buffer, 5X	AL008C	AL008F
HiBlock Buffer, 10X	AL004C	AL004F
High Salt (NaCl) Buffer, 5X	AL007C	AL007F
Immunoassay Buffer, 10X	AL000C	AL000F
Lysis Buffer, 5X	AL003C	AL003F
MES Buffer, 5X	AL017C	AL017F
PPI Buffer, 5X	AL015C	AL015F
Universal Assay Buffer, 5X	AL001C	AL001F

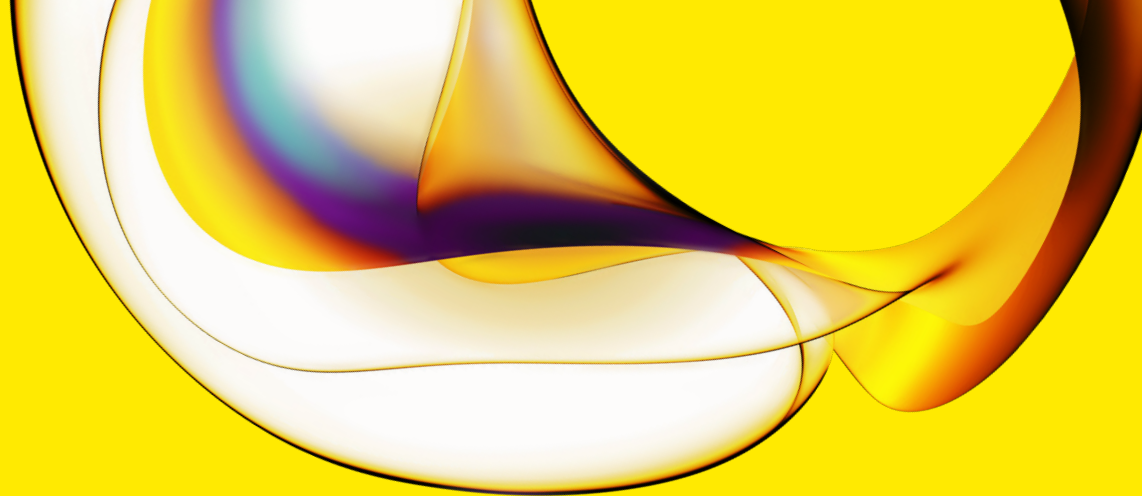
Control Beads: TruHits

Product Description	Part Number			
	500 Assay Points	1,000 Assay Points	5,000 Assay Points	10,000 Assay Points
AlphaScreen TruHits		6760627D		6760627M
AlphaLISA TruHits		AL900D		AL900M
AlphaPlex TruHits Sm	AP900SM-D		AP900SM-M	
AlphaPlex TruHits Tb	AP900TB-D		AP900TB-M	

Alpha Control Kits

Product Description	Part Number		
	1,000 Assay Points	10,000 Assay Points	50,000 Assay Points
AlphaScreen Omnibeads	6760626D	6760626M	6760626R

Kits launched recently are highlighted in **bold and orange**.



www.revvity.com

revvity

Copyright ©2025, Revvity, Inc. All rights reserved.
Revvity is a trademark of Revvity, Inc. All other trademarks are the property of their respective owners.

2211100 (1908352)

For research use only.
Not for use in diagnostic procedures.